

# ROCKY FLATS STEWARDSHIP COUNCIL

P.O. Box 17670

(303) 412-1200

Boulder, CO 80308-0670

[www.rockyflatssc.org](http://www.rockyflatssc.org)

Jefferson County ~ Boulder County ~ City and County of Broomfield ~ City of Arvada ~ City of Boulder  
City of Golden ~ City of Northglenn ~ City of Thornton ~ City of Westminster ~ Town of Superior  
League of Women Voters ~ Rocky Flats Cold War Museum ~ Rocky Flats Homesteaders  
Kim Griffiths

## **Special COVID-19 Announcement**

**Board of Directors Meeting  
Monday, October 26, 2020, 8:30 – 10:35 AM**

Due to COVID-19 social distancing requirements, the Rocky Flats Stewardship Council Board of Directors will meet via WebEx, with an internet/phone link provided by separate notice. The meeting is open to the public. Following the direction of local governments and other public entities throughout Colorado, public engagement is being modified for this virtual meeting.

To ensure the meeting participants are able to hear the information being presented and the members of the Board of Directors are able to engage in conversation, the following meeting-specific protocols have been developed:

1. Public comments during the 8:40 am (approximate time) public comment period are limited to two minutes. Participants must sign up in advance by emailing a request to speak to [info@rockyflatssc.org](mailto:info@rockyflatssc.org). Requests must be made no later than 5:00 pm (MDT), Thursday, October 22, 2020. Persons submitting requests after this deadline will not be allowed to speak during the public comment period.
2. Public comments on the DOE Quarterly Report presentation are limited to written comments. Comments must be sent to [info@rockyflatssc.org](mailto:info@rockyflatssc.org). All comments sent by 5:00 pm (MDT), Thursday, October 22, 2020, will be forwarded to the Board of Directors prior to the meeting. Comments sent during or following the meeting are also accepted.
3. All written comments, including those sent during or following the meeting, will be posted on the Stewardship Council website 1-2 weeks following the October 22, 2020, meeting.
4. DOE has agreed to respond in writing to comments offered on that agency's annual report. Those responses will be posted on the Stewardship Council website.

Please direct any questions to [dabelson@rockyflatssc.org](mailto:dabelson@rockyflatssc.org)

# ROCKY FLATS STEWARDSHIP COUNCIL

P.O. Box 17670

(303) 412-1200

Boulder, CO 80308-0670

[www.rockyflatssc.org](http://www.rockyflatssc.org)

Jefferson County ~ Boulder County ~ City and County of Broomfield ~ City of Arvada ~ City of Boulder  
City of Golden ~ City of Northglenn ~ City of Thornton ~ City of Westminster ~ Town of Superior  
League of Women Voters ~ Rocky Flats Cold War Museum ~ Rocky Flats Homesteaders  
Kim Griffiths

## **Board of Directors Meeting – Agenda**

**Monday, October 26, 2020, 8:30 – 10:35 AM**

**VIA WEBEX**

Email [info@rockyflatssc.org](mailto:info@rockyflatssc.org) for WebEx details

- 8:30 AM Convene/Introductions/Agenda Review
- 8:40 AM Public Comment: Comments are limited to the Consent Agenda and non-agenda items. See the “Special COVID-19 Announcement” for details.
- 8:50 AM Business Items (briefing memo attached)
1. Consent Agenda
    - Approval of meeting minutes and checks
  2. Executive Director’s Report
- 9:00 AM Host DOE Quarterly Meeting (briefing memo attached)
- DOE will brief on site activities for the second quarter of 2020 (April – June).
  - DOE has posted the report on its website and will provide a summary of its activities to the Stewardship Council.
  - Activities included surface water monitoring, groundwater monitoring, ecological monitoring, and site operations (inspections, maintenance, etc.).
- Public Comment on DOE Briefing: As explained in the “Special COVID-19 Announcement,” all comments must be submitted in writing.
- 9:45 AM Board Approval of 2021 Work Plan (briefing memo attached)
- The Board reviewed the draft 2021 Work Plan at the September meeting.
  - The only change was the addition of an item on climate adaptation and resilience.

**Action Item: Approve 2021 Work Plan**

- 9:50 AM Board Approval of 2021 Budget (briefing memo attached)
- The Board reviewed the draft budget at the September meeting. No changes were offered.
  - Prior to finalizing the budget, the Board must hold a budget hearing and allow time for public comment.
  - Following the public hearing, the Board must approve the budget resolution.

**Action Item: Hold fiscal year 2021 budget hearing and approve resolution adopting the budget**

- 10:00 AM New Member Selection
- Three entities applied for membership to the Rocky Flats Stewardship Council.
  - The governments will vote to approve two for Board membership.

**Action Item: Interview the applicants and make the appointments**

- 10:30 AM Board Roundtable – Big Picture/Additional Questions/Issue Identification

Adjourn

Upcoming Meetings:

February 1, 2021

April 5, 2021

## **Business Items**

- September 14, 2020, draft board meeting minutes
- Stewardship Council checks

## **DOE Quarterly Report**

- Cover memo
- Selection of Quarterly Report

**ROCKY FLATS STEWARDSHIP COUNCIL**  
**Monday, September 14th, 2020, 8:30 – 10:15 AM**  
**Virtual Meeting via WebEx**

**Board members in attendance:** Nancy Ford (Arvada), Sandra McDonald (Alternate, Arvada), Matt Jones (Director, Boulder County), Summer Laws (Alternate, Boulder County), Sam Weaver (Director, City of Boulder), Heidi Henkel (Alternate, Broomfield), David Allen (Alternate, Broomfield), Jim Dale (Director, Golden), Libby Szabo (Director, Jefferson County), Pat O’Connell (Alternate, Jefferson County), Joyce Downing (Director, Northglenn), Shelley Stanley (Alternate, Northglenn), Mark Lacin (Director, Superior), Ken Lish (Alternate, Superior), Jan Kulmann (Director, Thornton), James Boswell (Alternate, Thornton), Kathryn Skulley (Director, Westminster), Rich Seymour (Alternate, Westminster), Lindie Aragon (Alternate, Westminster), Jeannette Hillery (Director, League of Women Voters), Linda Porter (Alternate, League of Women Voters), Roman Kohler (Rocky Flats Homesteaders), Kim Griffiths (Director/Citizen).

**Stewardship Council staff members and consultants in attendance:** David Abelson (Executive Director), Melissa Weakley (Technical Program Manager), Barb Vander Wall (Seter & Vander Wall, P.C).

**Attendees:** Carmelo Melendez (DOE-LM), Scott Surovchak (DOE-LM), Andy Keim (DOE-LM), Gwen Hooten (DOE-LM), Nicole Lachance (Navarro), Chris Stewart (Navarro), Dana Santi (Navarro), John Boylan (Navarro), George Squibb (Navarro), Padraic Benson (Navarro), Harry Bolton (Navarro), Ryan Wisniewski (Navarro), Jesse Aviles (EPA), Lindsey Archibald (CDPHE), Lindsey Masters (CDPHE), Cathy Shugarts (Westminster), Laura Hubbard (Broomfield), Trea Nance (Westminster), Bill Ray (JHPPA), Lynn Segal (citizen)

**Convene/Agenda Review**

Joyce Downing convened the meeting at 8:30 am.

**Public Comment**

Prior to the meeting, Lynn Segal requested to speak during the public comment period. Joyce recognized her at this time. Lynn said she wanted to share her mother’s obituary, and described events related to the fire at Rocky Flats in 1957 and her mother’s illness. She said she could not prove that her mother died from effects of this fire, but that she did not believe anyone should set foot on the Rocky Flats National Wildlife Refuge for 24,000 years.

**Consent Agenda**

The consent agenda included approval of the minutes from the June meeting and the checks written since the last meeting.

Jeannette Hillery moved to approve the June Board minutes as amended and the checks. The motion was seconded by Mark Lacin. The motion to accept the minutes and checks passed 12-0.

**Executive Director’s Report**

David Abelson spoke to the Board about a few issues. David noted that applications were currently being taken for two community seats on the RFSC that expire this year (Rocky Flats Cold War Museum and Kim Griffiths seats). Applications are due October 1, and the local government representatives on the Stewardship Council will be conducting interviews and making appointments at the October 26 meeting.

David next briefed on the upcoming triennial review of the Intergovernmental Agreement. Every three years, all local governments who hold seats on the RFSC are asked to either opt-out of their role on the Board or express their interest in continuing their participation for the next three-year period by passing a resolution to this effect. These resolutions should be approved no later than mid-January 2021.

### **Host DOE Quarterly Meeting**

DOE was on hand to brief the Board regarding site activities for the first quarter of 2020 (January—March). The full report was posted on [https://www.lm.doe.gov/Rocky\\_Flats/Documents.aspx](https://www.lm.doe.gov/Rocky_Flats/Documents.aspx) Activities included surface water monitoring, groundwater monitoring, ecological monitoring, and site operations (inspections, maintenance, etc.).

The Rocky Flats Site remedy components include:

- Maintain two landfill covers
- Maintain three groundwater treatment systems
- Monitor surface water and groundwater
- Maintain physical controls
  - Signage
  - Access restriction
- Institutional controls
  - No occupied building construction
  - Excavation and soil-disturbance restrictions
  - No surface water consumption or agricultural use
  - No groundwater wells, except for monitoring
  - Protection of landfill covers and engineered remedy components

### *Surface Water Monitoring – George Squibb*

George described some changes implemented during the pandemic but noted that operations were not significantly affected. The site refers to these changes as ‘COVID-19 Minimum Safe Operations’:

- The Office of Legacy Management maximized telework on March 16
- Minimum Safe protocols began March 26, reducing some field operations
- All surface water and groundwater monitoring took place as required by RFMLA
- Groundwater treatment systems functioned as normal
- The Original Landfill maintenance project continued as scheduled following Centers for Disease Control and Prevention (CDC) guidelines

George moved on to a quick review of the monitoring requirements and map of locations and monitoring sites, noting the list of constituents which are monitored.

Routine surface water sampling in Woman Creek at monitoring station GS59, downstream of the Original Landfill (OLF), showed mean concentrations for all analytes below applicable RFLMA water quality standards.

At the Present Landfill Treatment System (PLFTS) effluent monitoring station,

- The arsenic concentration was 29 µg/L, exceeding the standard of 10 µg/L. Sampling frequency was increased to monthly. For the subsequent monthly sample, the arsenic concentration was

4.8 µg/L, below the 10 µg/L standard. After the subsequent monthly sample was evaluated, sampling frequency returned to quarterly

- Quarterly concentrations for all other analytes were below applicable RFLMA standards

Nancy Ford asked George whether there were patterns that allow the site to be able to explain what could be causing various exceedances. George said it depended on the circumstance. These events trigger a consultation between CDPHE, EPA and DOE. Based on over 25 years of data, many of the situations are well-understood and a lot of background data is available to use as decisions are made on how to proceed. It also depends on how far above a standard the reading is. Sometimes the parties decide additional monitoring is needed, and sometimes they may decide that certain mitigation work is necessary.

George said that no Point of Evaluation (POE) or Point of Compliance (POC) analyte concentrations were reportable during the first quarter of 2020.

#### *Groundwater Monitoring – John Boylan*

John first reviewed the RFLMA monitoring network, which includes:

- 10 Resource Conservation and Recovery Act (RCRA) wells (sampled quarterly to evaluate potential impacts from OLF and PLF)
- 9 Area of Concern (AOC) wells and one Surface Water Support location (sampled semiannually). These are located in drainages downstream of contaminant plumes and are evaluated for plumes discharging to surface water
- 27 Sentinel wells (sampled semiannually). These are downgradient of treatment systems, edges of plumes, and in drainages, and are used to look for plumes migrating to surface water and treatment system problems
- 42 evaluation wells (sampled biennially). These are located within plumes, near source areas, and interior of Central Operable Unit (COU) and are used to evaluate whether monitoring of an area or plume can cease
- 9 treatment system locations (seven are sampled semiannually, and two are quarterly)

During the first quarter of 2020, 10 RCRA wells were sampled at the PLF and OLF. Results were generally consistent with previous data and will be evaluated as part of the 2020 annual report.

Routine maintenance was conducted at all treatment systems:

- East Trenches Plume Treatment System (ETPTS)
- Mound Site Plume Collection System (MSPCS)
- Solar Ponds Plume Treatment System (SPPTS)
- PLFTS

At the SPPTS:

- Treated water was not discharged for part of January and February
- Pause in discharge led to water freezing in the effluent line
- Flow was restored after the line was cleared
- In the interim, treated water was held within the “Big Box” (treatment lagoon)

#### *Site Operations – John Boylan*

John explained that an Annual Site Inspection is conducted each year to monitor for evidence of significant erosion and any violations of institutional controls. He said that the CY 2020 Annual Inspection was postponed due to restrictions under the DOE coronavirus Minimum Safe operational status. The site team verified that the restrictive notice for the COU remains in the Administrative Record and on file with Jefferson County.

RFLMA physical controls were also verified. Signs were inspected in March and all were found to be in good condition and legible. Some DOE stickers were replaced due to weathering.

Monthly and weather-related inspections were conducted at the OLF:

- 5-foot-long and 3-inch-deep tension cracks were observed above berm 4 in January
  - Addressed by the subcontractor
  - Seep 2/3 excavated and Seep 8C partially covered during maintenance activities
- Surveyed settlement monuments on March 2, 2020
  - Vertical settling was within design limits
- Mobilization and site preparation for slope stabilization project in September
- Drilling progress in February was slowed by multiple snow events and periods with high winds
- By the end of the quarter, 212 of 267 tie-back anchors were installed, tested, and locked off
- East and West Interceptor Trenches neared completion. East Subsurface Drain continues to function as designed
- Seep 10 siphon and temporary groundwater intercept system offline during the first quarter
  - Maintenance activity in the area to render these systems obsolete

A quarterly inspection was conducted in March at the PLF. The landfill was found to be in good condition. Some minor maintenance was performed at the PLFTS outlet.

The scheduled first quarter inspection of Former Building Areas 371, 771, 881, and 991 was postponed due to restrictions under the coronavirus Minimum Safe operational status.

John next spoke about the North Walnut Creek Slump.

- Continued data collection from piezometers where possible
  - RFMLA monitoring points in this area are not impacted
- Slump monitoring points were surveyed on January 7, February 6, and March 2, 2020
  - Maximum movement since baseline (September 5, 2017) was approximately 2 1/2 feet vertically
  - Scarp crack largely remained closed due to elk traffic in the area; open 1/4 to 1/2 inch in places
  - Small cracking continued in the Interceptor Trench System Sump access road

Nancy Ford asked what causes the cracking. John said the geology includes very thick, but weak claystone that does not transmit water very well, and loose granular alluvium above it which does. On hillsides, if the claystone is saturated and the overlaying alluvium gets too heavy, the clay layer may give out and form slumps. The potential for movement is minimized when the clay is dry.

David Abelson asked about the lifespan of the anchors. Harry Bolton noted he was not sure of the specific design life and believed they were meant to be permanent. Nancy Ford brought up a recent



article in the Denver Post related to climate change. She asked whether the site was anticipating effects of climate change on current mitigation efforts. John said RFLMA protocols will dictate necessary response to any changes. Also, DOE-LM does have a program looking at long-term climate change issues. Nancy asked whether they are anticipating any major effects. John said he was not involved in those discussions. David Abelson said that the RFSC brought up these questions several years ago. Some of the specific examples discussed were the effect of vegetation changes on land species, as well as high and low water events. He suggested that this was a topic that the Board could discuss further in 2021.

Finally, John updated on site roads. No maintenance was conducted during the first quarter. Maintenance of site roads is being planned for October 2020

### **2020 Work Plan – Initial Review**

The Board began its review and edit the draft 2020 Work Plan. David noted that there were no significant changes from past years. Formal approval of the work plan is scheduled to take place at the October 26<sup>th</sup> meeting. There was a slight change to the language regarding mineral rights, based on upcoming congressional changes. David explained that plans for topics to be addressed at meetings are based on the discussion of the ‘Big Picture’ at the end of each meeting. He asked if board members agreed with the previous conversation recommending discussion of climate change implications in 2021. There was agreement, so David will add a provision to the work plan. No other changes were provided.

### **2020 Budget – Initial Review**

The Board began its review of the draft 2020 budget. The budget hearing and adoption of the 2020 budget will take place at the October 26<sup>th</sup> meeting. David explained that the Stewardship Council’s budget was relatively flat as compared to prior years. Expenditures were down a bit during 2020 due to reduced travel and conference attendance. Also, to address loss of tax revenue by local governments, local government contributions are being suspended for 2021. No changes were provided by Board members.

### **Board Roundtable**

No updates were provided.

### **Big Picture/Additional Questions/Issue Identification**

#### **October 26, 2020**

##### *Potential Business Items*

- Adopt 2020 Work Plan
- Adopt 2020 Budget
- New member Interviews/Appointments

##### *Potential Briefing Items*

- DOE Quarterly Update

#### **February 1, 2021**

##### *Potential Business Items*

- Elect 2021 Officers

- Adopt Resolution re: 2021 Meeting Dates

*Potential Briefing Items*

- DOE Quarterly Update

Sandra McDonald asked whether CDPHE would be giving a presentation on potential radiation doses from the Jefferson Parkway. David said CDPHE did provide a public briefing on this, which was attended by many of the local governments. The Executive Committee decided this presentation did not need to be repeated at the Stewardship Council meeting pending any strong expression of interest from board members. Nancy Ford said she listened to that briefing but had several questions that were not answered. She said she thought it would be worth discussing many of the assumptions in the report with those who wrote the report. David said that he would connect Nancy with the appropriate people at CDPHE who can answer her questions. He also said that one thing he found to be quite notable from the report was that the researchers found, even if one were to assume that the entire parkway construction area was contaminated to the level of the one high sampling sample, that the resulting dose would be lower than that allowed for unrestricted use of the site. Nancy said she still questioned things such as the methods, models and measurements used, and would like to see a better explanation of these things. She would also like to see the names and backgrounds of the specific authors.

Issues to watch:

- Uranium exceedances in surface water
- Trichloroethylene (TCE) exceedances in groundwater

The meeting was adjourned at 10:15 am.

*Respectfully submitted by Erin Rogers.*

**Rocky Flats Stewardship Council**  
**Check Detail 2020**  
August 29 through October 13, 2020

Type	Num	Date	Name	Account	Paid Amount	Original Amount
Check	2058	09/02/2020	Century Link	CASH-Wells Fargo-Operating		<b>-26.01</b>
				Telecommunications	-26.01	26.01
TOTAL					-26.01	26.01
Bill Pmt -Check	2059	09/02/2020	Crescent Strategies, LLC	CASH-Wells Fargo-Operating		<b>-7,993.97</b>
Bill	8/31/20 Billing	08/31/2020		Personnel - Contract	-7,750.00	7,750.00
				TRAVEL-Local	-18.40	18.40
				Postage	-15.99	15.99
				Telecommunications	-92.58	92.58
				Admin Services-Misc Services	-117.00	117.00
TOTAL					-7,993.97	7,993.97
Bill Pmt -Check	2060	09/02/2020	Jennifer A. Bohn	CASH-Wells Fargo-Operating		<b>-370.50</b>
Bill	20-58	08/31/2020		Accounting Fees	-370.50	370.50
TOTAL					-370.50	370.50
Check	2061	10/05/2020	Century Link	CASH-Wells Fargo-Operating		<b>-27.40</b>
				Telecommunications	-27.40	27.40
TOTAL					-27.40	27.40
Bill Pmt -Check	2062	10/05/2020	Crescent Strategies, LLC	CASH-Wells Fargo-Operating		<b>-7,888.39</b>
Bill	9/30/20 Billing	09/30/2020		Personnel - Contract	-7,750.00	7,750.00
				TRAVEL-Local	-18.40	18.40
				Postage	-17.99	17.99
				Telecommunications	-102.00	102.00
TOTAL					-7,888.39	7,888.39
Bill Pmt -Check	2063	10/05/2020	Jennifer A. Bohn	CASH-Wells Fargo-Operating		<b>-170.00</b>
Bill	20-62	09/30/2020		Accounting Fees	-170.00	170.00
TOTAL					-170.00	170.00

# ROCKY FLATS STEWARDSHIP COUNCIL

P.O. Box 17670  
Boulder, CO 80308-0670  
www.rockyflatssc.org

(303) 412-1200

Jefferson County ~ Boulder County ~ City and County of Broomfield ~ City of Arvada ~ City of Boulder  
City of Golden ~ City of Northglenn ~ City of Thornton ~ City of Westminster ~ Town of Superior  
League of Women Voters ~ Rocky Flats Cold War Museum ~ Rocky Flats Homesteaders  
Kim Griffiths

## MEMORANDUM

**TO:** Stewardship Council Board of Directors  
**FROM:** Melissa Weakley  
**SUBJECT:** DOE's Quarterly Report (Q2 2020) Briefing  
**DATE:** October 15, 2020

---

DOE will present an overview of remedy-related surveillance, monitoring, and maintenance activities conducted at Rocky Flats during the second quarter (April 1 to June 30) of calendar year 2020. The full report can be accessed here: [https://www.lm.doe.gov/Rocky\\_Flats/2Q20\\_RFS.pdf](https://www.lm.doe.gov/Rocky_Flats/2Q20_RFS.pdf).

### Quarterly Report Summary

- **COVID-19 Protocols:** On March 26, 2020, DOE initiated "Minimum Safe" (Min Safe) operational requirements and protocols in response to the coronavirus pandemic. Min Safe entails minimizing staff presence and activities at all Legacy Management sites, including Rocky Flats and the associated office building. Only the most critical activities were performed. Restrictions were reduced slightly beginning May 18, allowing additional field activities to be conducted.
- **Sitewide Inspection:** The annual sitewide inspection was completed on May 31. No evidence of violations of institutional or physical controls was observed, and no adverse biological conditions were noted during the inspection.
- **Present Landfill (PLF):** The PLF quarterly inspection was conducted on April 24 in conjunction with a weather-related inspection. A vent cap was noted laying on the ground; the cap was replaced shortly after the inspection. No other issues were identified.
- **Original Landfill (OLF):** The OLF monthly inspections were conducted on April 19, May 29, and June 22. The April monthly inspection was conducted in combination with a weather-related inspection.
  - No issues were found during the April and June inspections.
  - During the May inspection, a 4-inch to 5-inch diameter animal burrow was found near the center of Seep 8B. No evidence of recent inhabitation was noted, and the burrow was flooded to the surface. (The report does not discuss the corrective actions, if any, that were taken.)
- **Groundwater Treatment Systems (East Trenches Plume Treatment System, Mound Site Plume Collection System, Solar Ponds Plume Treatment System, and Present Landfill Treatment System):** Routine maintenance of all four systems was performed. No significant issues were noted.

- **Groundwater Monitoring:** Eighty-six (86) groundwater samples were collected and analyzed (see attached Monitoring Location figure). Results were generally consistent with previous data and will be evaluated as part of the annual report for 2020.
- **Surface Water Monitoring:** Thirty-five (35) composite surface water samples, 14 surface water grab samples, and 14 treatment system grab samples were collected and analyzed (see attached Monitoring Location figure).
  - All analyte concentrations at RFLMA Point of Evaluation locations GS10, SW027, and SW093 remained below reportable condition levels throughout the quarter.
  - All analyte concentrations at RFLMA Point of Compliance locations WALPOC and WOMPOC also remained below reportable condition levels throughout the quarter.

### **Attachments**

Q2 2020 Report Cover Page, Table of Contents, and Abbreviations

Original Landfill Figure

Rocky Flats Site Water Monitoring Locations

**Rocky Flats Site, Colorado,  
Quarterly Report of  
Site Surveillance and  
Maintenance Activities  
Second Quarter  
Calendar Year 2020**

**October 2020**



U.S. DEPARTMENT OF  
**ENERGY**

Legacy  
Management

# Contents

Abbreviations.....	iii
Executive Summary.....	v
1.0 Introduction.....	1
2.0 Site Operations and Maintenance.....	2
2.1 Landfills.....	2
2.1.1 Present Landfill.....	2
2.1.1.1 Inspection Results.....	2
2.1.1.2 Settlement Monuments.....	2
2.1.2 Original Landfill.....	2
2.1.2.1 Inspection Results.....	3
2.1.2.2 Settlement Monuments.....	3
2.1.2.3 Stabilization Activities.....	4
2.2 COU Inspections.....	4
2.3 North Walnut Creek Slump.....	5
2.4 Site Roads Maintenance.....	5
2.5 Groundwater Treatment Systems.....	5
2.5.1 Mound Site Plume Collection System.....	5
2.5.2 East Trenches Plume Treatment System.....	6
2.5.3 Solar Ponds Plume Treatment System.....	6
2.5.4 Present Landfill Treatment System.....	7
2.6 Sign Inspection.....	7
2.7 Erosion Control and Revegetation.....	7
3.0 Environmental Monitoring.....	7
3.1 Water Monitoring.....	8
3.1.1 Water Monitoring Highlights.....	8
3.1.2 POC Monitoring.....	11
3.1.2.1 Monitoring Location WALPOC.....	11
3.1.2.2 Monitoring Location WOMPOC.....	14
3.1.3 POE Monitoring.....	17
3.1.3.1 Monitoring Location GS10.....	17
3.1.3.2 Monitoring Location SW027.....	18
3.1.3.3 Monitoring Location SW093.....	20
3.1.4 AOC Wells and Surface Water Support Location SW018.....	21
3.1.5 Sentinel Wells.....	21
3.1.6 Evaluation Wells.....	21
3.1.7 PLF Monitoring.....	22
3.1.8 OLF Monitoring.....	22
3.1.9 Groundwater Treatment System Monitoring.....	22
3.1.9.1 Mound Site Plume Collection System.....	22
3.1.9.2 East Trenches Plume Treatment System.....	22
3.1.9.3 Solar Ponds Plume Treatment System.....	23
3.1.9.4 Present Landfill Treatment System.....	23
3.1.10 Predischarge Monitoring.....	23
4.0 Adverse Biological Conditions.....	23
5.0 Ecological Monitoring.....	23
6.0 References.....	24

# Figures

Figure 1.	Rocky Flats Site Water Monitoring Locations and Precipitation Gauges.....	9
Figure 2.	Volume-Weighted 30-Day Average Plutonium and Americium Activities at WALPOC: Year Ending Second Quarter 2020 .....	11
Figure 3.	Volume-Weighted 12-Month Rolling Average Plutonium and Americium Activities at WALPOC: Year Ending Second Quarter 2020 .....	12
Figure 4.	Volume-Weighted 30-Day Average Uranium Concentrations at WALPOC: Year Ending Second Quarter 2020 .....	12
Figure 5.	Volume-Weighted 12-Month Rolling Average Uranium Concentrations at WALPOC: Year Ending Second Quarter 2020 .....	13
Figure 6.	Volume-Weighted 30-Day Average Nitrate + Nitrite as Nitrogen Concentrations at WALPOC: Year Ending Second Quarter 2020.....	13
Figure 7.	Volume-Weighted 12-Month Rolling Average Nitrate + Nitrite as Nitrogen Concentrations at WALPOC: Year Ending Second Quarter 2020.....	14
Figure 8.	Volume-Weighted 30-Day Average Plutonium and Americium Activities at WOMPOC: Year Ending Second Quarter 2020 .....	15
Figure 9.	Volume-Weighted 12-Month Rolling Average Plutonium and Americium Activities at WOMPOC: Year Ending Second Quarter 2020.....	15
Figure 10.	Volume-Weighted 30-Day Average Uranium Concentrations at WOMPOC: Year Ending Second Quarter 2020 .....	16
Figure 11.	Volume-Weighted 12-Month Rolling Average Uranium Concentrations at WOMPOC: Year Ending Second Quarter 2020 .....	16
Figure 12.	Volume-Weighted 12-Month Rolling Average Plutonium and Americium Activities at GS10: Year Ending Second Quarter 2020 .....	17
Figure 13.	Volume-Weighted 12-Month Rolling Average Uranium Concentrations at GS10: Year Ending Second Quarter 2020 .....	18
Figure 14.	Volume-Weighted 12-Month Rolling Average Plutonium and Americium Activities at SW027: Year Ending Second Quarter 2020.....	19
Figure 15.	Volume-Weighted 12-Month Rolling Average Uranium Concentrations at SW027: Year Ending Second Quarter 2020.....	19
Figure 16.	Volume-Weighted 12-Month Rolling Average Plutonium and Americium Activities at SW093: Year Ending Second Quarter 2020.....	20
Figure 17.	Volume-Weighted 12-Month Rolling Average Uranium Concentrations at SW093: Year Ending Second Quarter 2020.....	21

# Appendixes

- Appendix A Landfill Inspection Forms and Survey Data, Second Quarter 2020
- Appendix B Analytical Results for Water Samples, Second Quarter 2020



## Abbreviations

Am	americium
AMP	Adaptive Management Plan
AOC	Area of Concern
BMP	best management practice
CAD/ROD	Corrective Action Decision/Record of Decision
COU	Central Operable Unit
CY	calendar year
DOE	U.S. Department of Energy
ESSD	East Subsurface Drain
ETPTS	East Trenches Plume Treatment System
IC	institutional control
LM	Office of Legacy Management
mg/L	milligrams per liter
µg/L	micrograms per liter
minsafe	minimum safe
MSPCS	Mound Site Plume Collection System
MSPTS	Mound Site Plume Treatment System
N	nitrogen
OLF	Original Landfill
pCi/L	picocuries per liter
PLF	Present Landfill
PLFTS	Present Landfill Treatment System
POC	Point of Compliance
POE	Point of Evaluation
Pu	plutonium
RCRA	Resource Conservation and Recovery Act
RFLMA	<i>Rocky Flats Legacy Management Agreement</i>
RFSOG	Rocky Flats Site Operations Guide
SPPTS	Solar Ponds Plume Treatment System
TCE	trichloroethene

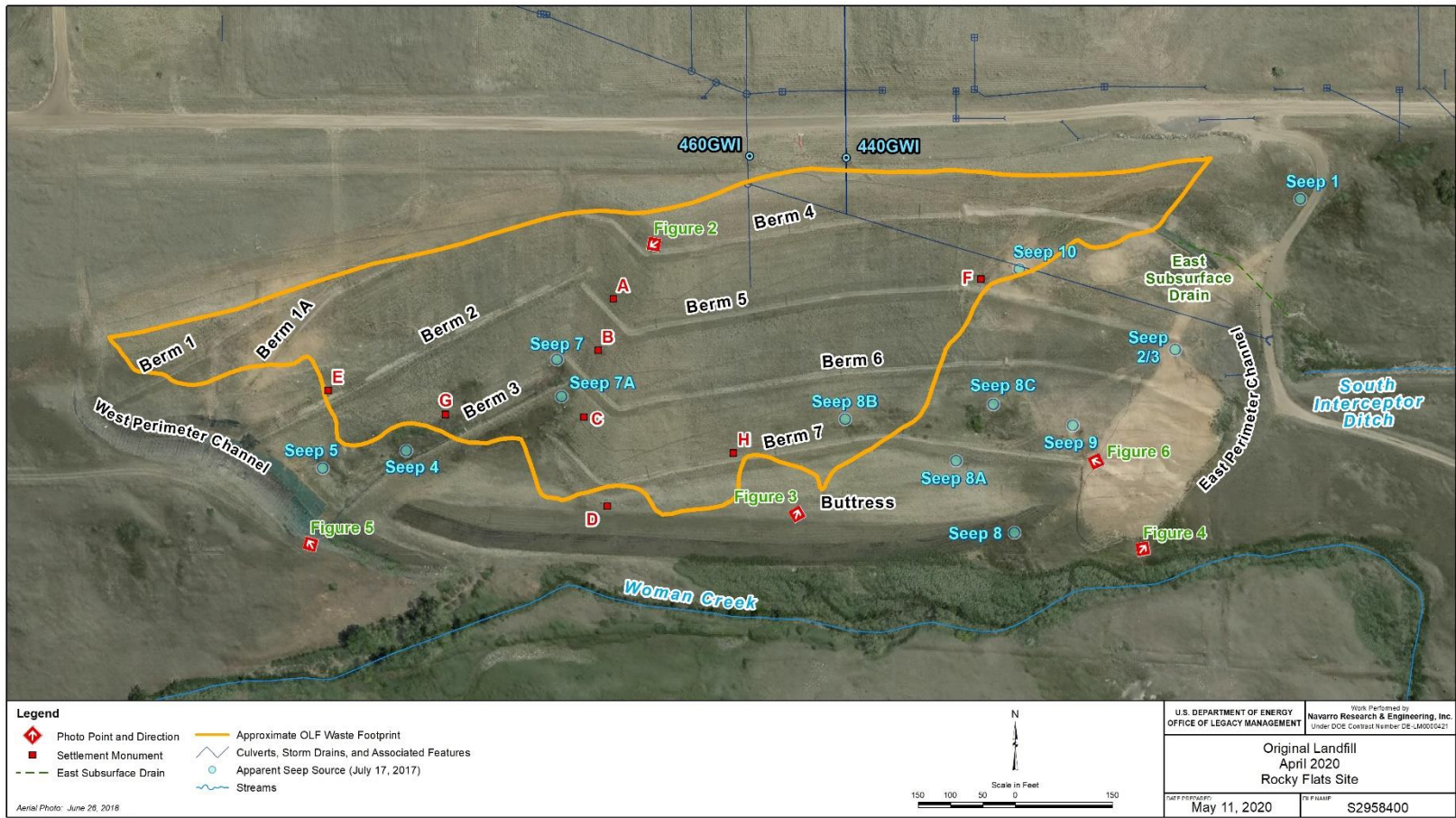


Figure 1. OLF Key Features and Locations, and Direction of Report Figure Photographs, Rocky Flats Site, Colorado



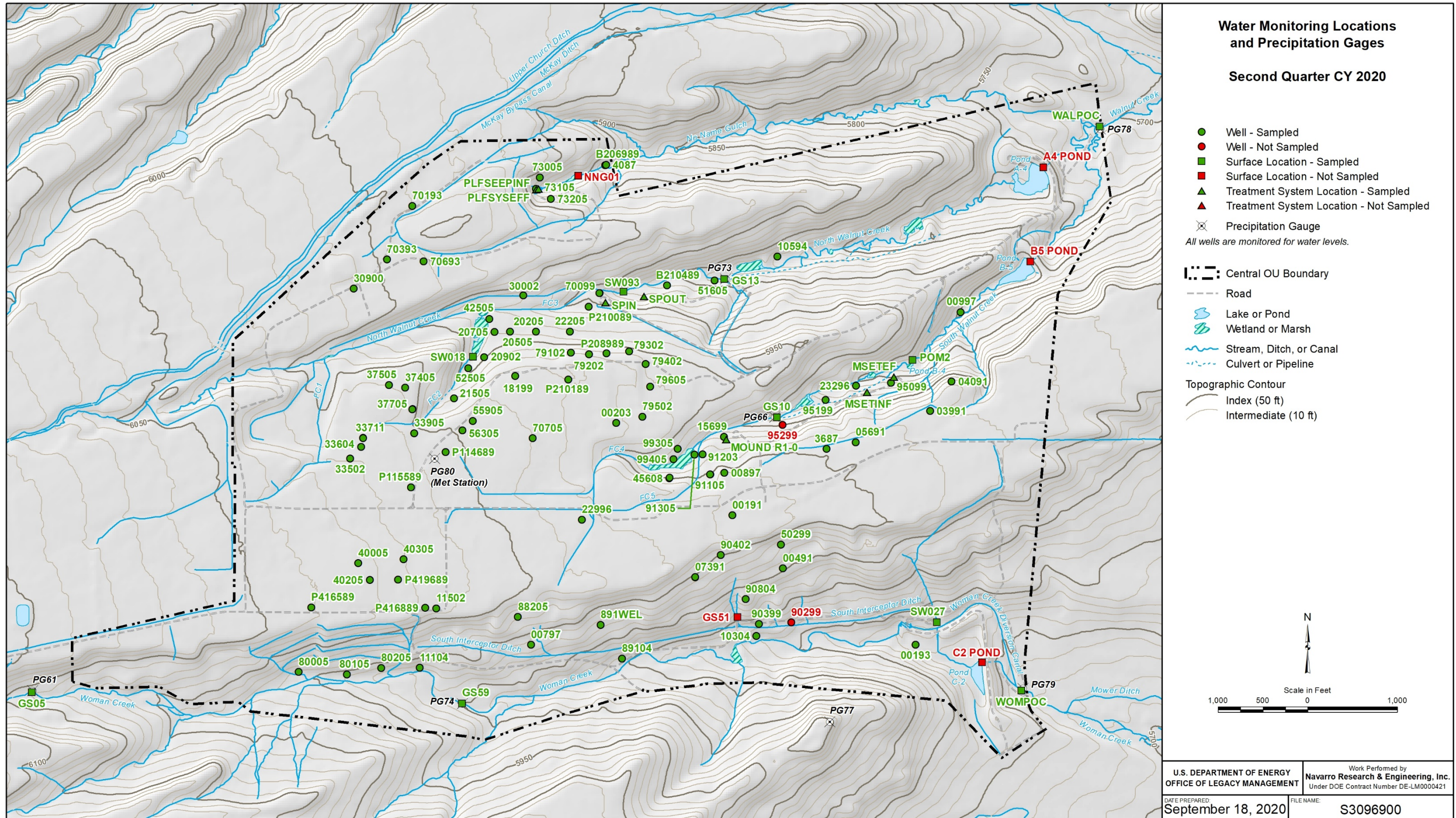


Figure 1. Rocky Flats Site Water Monitoring Locations and Precipitation Gauges



## **2021 Work Plan**

- Cover memo
- Draft work plan

## **2021 Budget**

- Cover memo
- Draft budget
- Budget Resolution and Notice

# ROCKY FLATS STEWARDSHIP COUNCIL

P.O. Box 17670

(303) 412-1200

Boulder, CO 80308-0670

[www.rockyflatssc.org](http://www.rockyflatssc.org)

Jefferson County ~ Boulder County ~ City and County of Broomfield ~ City of Arvada ~ City of Boulder  
City of Golden ~ City of Northglenn ~ City of Thornton ~ City of Westminster ~ Town of Superior  
League of Women Voters ~ Rocky Flats Cold War Museum ~ Rocky Flats Homesteaders  
Kim Griffiths

## MEMORANDUM

**TO:** Board  
**FROM:** David Abelson & Melissa Weakley  
**SUBJECT:** Draft 2020 Work Plan  
**DATE:** October 16, 2020

---

The Board will approve the 2021 work plan. The Board reviewed the draft plan at the September 14<sup>th</sup> meeting. The one change offered is noted using track changes. No other changes have been made.

**Action Item: Approve 2021 Work Plan**

# ROCKY FLATS STEWARDSHIP COUNCIL

P.O. Box 17670  
Boulder, CO 80308-0670  
www.rockyflatssc.org

(303) 412-1200

Jefferson County ~ Boulder County ~ City and County of Broomfield ~ City of Arvada ~ City of Boulder  
City of Golden ~ City of Northglenn ~ City of Thornton ~ City of Westminster ~ Town of Superior  
League of Women Voters ~ Rocky Flats Cold War Museum ~ Rocky Flats Homesteaders  
Kim Griffiths

## **2021 Work Plan**

*Draft #2, October 26, 2020*

### **Mission:**

The mission of the Rocky Flats Stewardship Council (Stewardship Council) is to provide continuing local engagement on activities occurring at the Rocky Flats site regarding long-term stewardship of residual contamination and refuge management; to provide a forum to track issues related to former site employees, including but not limited to long-term health benefits and pension programs; to provide an ongoing mechanism to help maintain public knowledge of Rocky Flats and the ongoing needs and responsibilities regarding contaminant management and refuge management; and to provide an ongoing forum to engage on all other issues pertinent to Rocky Flats, as determined by the Stewardship Council Board of Directors (Board).

### **Background:**

The Stewardship Council occupies two roles: (1) serving as the Local Stakeholder Organization (LSO) for Rocky Flats, and (2) engaging the U.S. Fish & Wildlife Service (USFWS) on the management of the Rocky Flats National Wildlife Refuge (Refuge). To help ensure the Board and public understand when the Stewardship Council acts in its capacity as the Rocky Flats LSO and when it engages on issues beyond its scope as the LSO, the plan includes headers indicating “LSO” and “Non-LSO” activities.

### Local Stakeholder Organization (LSO)

The Department of Energy (DOE) Office of Legacy Management (LM) approved the LSO Plan for Rocky Flats on December 21, 2005. That Plan identifies how the main responsibilities Congress identified in the legislation authorizing the creation of LSO (Section 3120 of the Fiscal Year 2005 Defense Authorization bill) are to be carried out at Rocky Flats. These responsibilities are summarized as follows:

- Solicit and encourage public participation in appropriate activities relating to the closure and post-closure operations of the site.
- Disseminate information on the closure and post-closure operations of the site to the State, local and Tribal governments in the vicinity of the site, as well as persons and entities having a stake in the closure or post-closure operations of the site.
- Transmit to appropriate officers and employees of DOE questions and concerns of governments, persons, and entities referred to in the preceding bullet.

In fulfilling these responsibilities, the Stewardship Council has been tasked with helping LM meet its public involvement obligations identified in the Legacy Management Public Involvement Plan (LMPPI) for Rocky Flats.

### Rocky Flats National Wildlife Refuge (non-LSO activity)

“The Rocky Flats National Wildlife Refuge Act of 2001” established that Rocky Flats shall become a national wildlife refuge following U.S. Environmental Protection Agency (EPA) certification that the site has been cleaned to the agreed-upon regulatory standards. In July 2007, DOE conveyed jurisdictional responsibility of nearly 4,000 acres to the Department of the Interior for the Rocky Flats National Wildlife Refuge. Additional lands were conveyed in 2014.

USFWS opened the Refuge for guided tours in 2015 and for public recreation in 2018. Additional trails will open in the Refuge in the coming years.

---

---

### **Work Plan Elements**

The Work Plan is divided into the following five sections:

1. DOE Management Responsibilities (LSO activity)
2. Former Rocky Flats Workforce (LSO activity)
3. Outreach (LSO activity with two exceptions noted)
4. Rocky Flats National Wildlife Refuge (non-LSO activity)
5. Business Operations (LSO activity)

### **DOE Management Responsibilities**

#### ***LSO Activity***

#### **Overview:**

One of the key roles of the Stewardship Council is to understand and engage the various issues regarding the cleanup and post-closure management of Rocky Flats, as well as to provide a forum to foster discussions among DOE, the regulatory agencies, and community members.

#### **2021 Activities:**

1. Review information regarding the long-term stewardship and management of the Rocky Flats site, including but not limited to the results of the operational and performance monitoring data of site operations and DOE status reports.
2. Continue to identify key questions about the cleanup and ongoing management, track the effectiveness of site remedies, and understand the impacts to human and ecological receptors. For 2021, this effort includes being briefed on analyses conducted by DOE, and the Colorado Department of Public Health and Environment (CDPHE) of risk and the protectiveness of the cleanup remedy.
3. Track the progress made in treating contaminated groundwater at the groundwater treatment systems, including the ongoing uranium treatment evaluation at the Solar Ponds Plume Treatment System (SPPTS).
4. Track the ongoing investigation into the source(s) of elevated actinide levels found in surface water. Of particular note are the cyclic uranium levels in North Walnut Creek at point of compliance WALPOC, elevated levels of actinides at point of evaluation GS10 on South Walnut Creek, and elevated plutonium levels at point of evaluation SW027 in the Woman Creek drainage.
5. Track the effectiveness of the remedy implemented to address slumping at the Original Landfill (OLF).
6. Track issues related to slumping along North Walnut Creek.

7. Understand the results of any additional sampling conducted off-site and in the Refuge. (Note: The issue is an LSO issue as it goes to the historic use of Rocky Flats as a weapons plant and associated residual contamination.)
8. Continue to participate in Adaptive Management Plan (AMP) meetings, including technical evaluations of data; track implementation of AMP results, which could include breaching the terminal ponds on Woman and Walnut Creeks.
9. Continue to track and evaluate DOE, CDPHE, and/or EPA assessment(s) of remedy operations and effectiveness.
10. Work with DOE on implementing its LMPIP, including the meetings DOE identified in the LMPIP.
11. Review DOE budgets for implementation of DOE responsibilities.
12. Understand potential legal and regulatory issues regarding implementation of the Rocky Flats Legacy Management Agreement and related site documents; provide this information to the Stewardship Council and to the community.
13. Work with DOE and the regulators to understand technical data regarding implementation and effectiveness of cleanup remedies and long-term controls; communicate this information to the Stewardship Council and to the community.
14. Transmit to appropriate DOE officers and employees any questions and/or concerns of governments, persons, and entities regarding Rocky Flats.
15. As opportunities allow, continue to work with DOE on the development of the visitor center.
16. Support the ongoing efforts of the Rocky Flats Cold War Museum to educate successive generations about the history of Rocky Flats, particularly about residual contamination and continued need for long-term stewardship.
17. Track the development of the Jefferson County Parkway as it relates to Rocky Flats.
18. Track Congressional actions/decisions affecting potential mineral development at Rocky Flats and engage as needed.
- 18-19. Examine the potential impacts of climate change on site remedies, focusing on climate adaptation and resilience, including shock events and changes over the long term.

**Former Rocky Flats Workforce**  
***LSO Activity***

**Overview:**

Many of the former site workers are the constituents of the Stewardship Council governments. Further, the Rocky Flats Homesteaders, which represents more than 1,800 former site workers, sits on the Board of the Stewardship Council. For these and other reasons, as noted in the Stewardship Council's Intergovernmental Agreement, worker issues will, as needed, continue to be an important component of the Stewardship Council's work. At this time, worker issues largely revolve around claims under the Energy Employee Occupational Illness Compensation Program Act (EEOICPA). Workers address claims on an individual basis.

**2021 Activities:**

1. Forward worker concerns, as necessary.



**Outreach**  
***LSO Activity (two exceptions noted)***

**Overview:**

As the LSO for Rocky Flats, a core responsibility for the Stewardship Council is providing a forum to help engage people on Rocky Flats and the ongoing management needs. As part of this mission, it remains essential that the Stewardship Council maintain close communications with DOE, EPA, CDPHE, and Congress.

The local communities have developed over the period of many years a very good working relationship with the two primary regulatory agencies that oversee the site, EPA and CDPHE. It is imperative that the Stewardship Council continue this tradition of partnership with these agencies.

The Colorado congressional delegation likewise plays a critical role in addressing Rocky Flats issues. The Stewardship Council shall remain an important mechanism for addressing questions and concerns of the delegation, as well as providing ongoing interface with the delegation on site-specific issues and concerns.

**2021 Activities:**

1. Hold quarterly Board meetings and provide opportunity for comment and dialogue.
2. Communicate with other local officials, DOE, state and federal regulators, the Colorado congressional delegation, and other stakeholders about the Stewardship Council's mission and activities, as appropriate.
3. Take public comment on issues related to DOE and USFWS responsibilities at Rocky Flats.<sup>1</sup>
4. Evaluate Congressional action affecting DOE and USFWS and administrative action that could affect Rocky Flats.<sup>2</sup>
5. Maintain communication with federal and state legislators, as appropriate, and track potentially impactful federal and state legislation as needed.
6. Provide opportunities at meetings and in between meetings for education on site-related issues and relevant feedback.
7. Work with DOE to disseminate information on the cleanup and post-closure operations of Rocky Flats.
8. Participate in local, regional and national forums.
9. Implement mechanisms for the Stewardship Council and the general public to be informed of the results of monitoring data and other relevant site-specific information, recognizing that not all communication between DOE and Rocky Flats constituencies will flow through the Stewardship Council.

**Rocky Flats National Wildlife Refuge**  
***Non-LSO Activity (one exception noted)***

**Overview:**

One of the Stewardship Council's roles is to engage on issues related to the development and management of the Refuge. In September 2018, USFWS began allowing public recreation at the Refuge.

---

<sup>1</sup> Issues related to USFWS are a non-LSO activity.

<sup>2</sup> Issues related to USFWS are a non-LSO activity.

In addition, USFWS and DOE are discussing a partnership to develop a visitor's center. That center would be sited on refuge lands, with USFWS taking lead on the public engagement process. As the LSO for Rocky Flats, the Stewardship Council would work with DOE on that agency's role in developing the visitor center. (That work with DOE is an LSO activity.) USFWS would take lead on public engagement; Stewardship Council members may be involved in that process.

The items identified in this part of the work plan only concern USFWS.

**2021 Activities:**

1. Track agency and Congressional action affecting funding for USFWS and the Refuge. Engage as needed.
2. Track issues related to the development of the Rocky Flats visitor center.<sup>3</sup> Engage as needed.
3. Be apprised of the Refuge site conservation plan, with an emphasis on the proposed trail plan.
4. Forward information regarding the Refuge to the Board and the public, as appropriate.
5. Track issues related to the development of a trail network connecting the Refuge, Rocky Mountain Arsenal National Wildlife Refuge, Two Ponds National Wildlife Refuge, and Rocky Mountain National Park.

**Business Operations**

***LSO Activity***

**Overview:**

Business Operations refers to organizational management responsibilities—conducting the annual audit, submitting financial reports to DOE, adopting the annual Work Plan and annual budget, etc.

**2021 Activities:**

1. Work with DOE to ensure the Stewardship Council continues to meet its responsibilities as the LSO for Rocky Flats.
2. Operate the Stewardship Council in compliance with state and federal regulations.
3. Conduct a financial audit.
4. Prepare and adopt the annual work plan and the annual budget.
5. Submit financial reports to DOE.
6. Review, and renew as necessary, consulting agreements.
7. Provide an annual report on activities.
8. Appoint community members to the Board (two seats).
9. Finalize the triennial review.

---

<sup>3</sup> As noted above, as the LSO for Rocky Flats, the Stewardship Council will work with DOE on that agency's role in developing the visitor center. The item identified in this part of the work plan only concerns USFWS's role.

# ROCKY FLATS STEWARDSHIP COUNCIL

P.O. Box 17670

(303) 412-1200

Boulder, CO 80308-0670

www.rockyflatssc.org

Jefferson County ~ Boulder County ~ City and County of Broomfield ~ City of Arvada ~ City of Boulder  
City of Golden ~ City of Northglenn ~ City of Thornton ~ City of Westminster ~ Town of Superior  
League of Women Voters ~ Rocky Flats Cold War Museum ~ Rocky Flats Homesteaders  
Kim Griffiths

## MEMORANDUM

**TO:** Board  
**FROM:** David Abelson  
**SUBJECT:** Fiscal Year 2021 Budget Hearing  
**DATE:** October 14, 2020

---

The Board will hold a budget hearing on the fiscal year 2021 Stewardship Council budget and approve a budget resolution adopting the budget. No changes were offered by the Board at the September 14<sup>th</sup> meeting. The sole change I have made since that meeting is to update the "2020 Actual/Projected Expenses" to include actual expenses through September.

The budget resolution and hearing notice are attached. Notice was published in the [Denver Post](#).

**Action Item: Hold fiscal year 2021 budget hearing and approve resolution adopting the budget**

**ROCKY FLATS STEWARDSHIP COUNCIL**  
2021 Budget -- Draft #2, October 26, 2020

	2021 Budget Amounts	2021 Anticipated Expenditures	2020 Budget	2020 Actual/ Projected Expenses*	vs. 2020 Actual/Project ed Expenses	2019 Expenses
<b>A. Personnel</b>	<b>\$ 93,000.00</b>	\$ 93,000.00	\$ 93,000.00	\$ 93,000.00	\$ -	\$ 94,150.00
Executive Director and Technical Advisor (\$7750/month)						
<b>B. Fringe Benefits</b>	<b>\$ -</b>	\$ -	\$ -	\$ -	\$ -	\$ -
Staff are contractors						
<b>C. Travel</b>	<b>\$ 7,300.00</b>					
<b>Out of State</b>	\$ 6,100.00	\$ 6,100.00	\$ 6,100.00	\$ 449.80	\$ (5,650.20)	\$ 4,968.00
National DOE-related trips						
<b>Local Travel</b>	\$ 1,200.00	\$ 1,000.00	\$ 1,200.00	\$ 312.43	\$ (887.57)	\$ 873.00
\$100/month for 12 months						
<b>D. Computer Equipment</b>	<b>\$ 500.00</b>	\$ -	\$ 500.00	\$ -	\$ (500.00)	\$ -
Purchase misc. hardware, software						
<b>E. Supplies</b>	<b>\$ 1,200.00</b>	\$ 100.00	\$ 1,200.00	\$ 50.00	\$ (1,150.00)	\$ 343.00
Supplies (\$100/month)						
<b>F. Contractual</b>	<b>\$ 39,500.00</b>					
<b>Attorney &amp; Accounting Services</b>						
Legal Services (\$1400/ month)	\$ 16,800.00	\$ 16,000.00	\$ 16,800.00	\$ 10,043.93	\$ (6,756.07)	\$ 11,925.00
Accounting (\$850/month)	\$ 10,200.00	\$ 5,800.00	\$ 10,200.00	\$ 4,473.00	\$ (5,727.00)	\$ 4,627.00
Audit Report	\$ 6,500.00	\$ 4,200.00	\$ 6,500.00	\$ 4,000.00	\$ (2,500.00)	\$ 4,000.00
<b>Admin. Services</b>						
Misc. Services: bank fees, etc.	\$ 1,000.00	\$ 100.00	\$ 1,000.00	\$ 257.40	\$ (742.60)	\$ 45.00
Minutes Preparation (5 meetings)	\$ 3,000.00	\$ 2,500.00	\$ 3,000.00	\$ 2,450.00	\$ (550.00)	\$ 2,750.00

<b>Local Government Expenses</b>	\$ 2,000.00	\$ 1,500.00	\$ 2,000.00	\$ 490.00	\$ (1,510.00)	\$ 2,306.00
Miscellaneous expenses not covered by DOE funds (includes meeting expenses and non-LSO activities)						
<b>G. Construction</b>	\$ -	\$ -	\$ -	\$ -	\$ -	\$ -
None						
<b>H. Other</b>	\$ 14,600.00					
<b>Printing &amp; Copy</b>	\$ 2,000.00	\$ 250.00	\$ 2,000.00	\$ -	\$ (2,000.00)	\$ -
<b>Postage</b>	\$ 1,500.00	\$ 300.00	\$ 1,500.00	\$ 641.88	\$ (858.12)	\$ 648.00
\$125/month for 12 months						
<b>Liability Insurance</b>						
Property Contents/General Liability	\$ 500.00	\$ 500.00	\$ 500.00	\$ 500.00	\$ -	\$ 500.00
Board Members	\$ 3,500.00	\$ 3,500.00	\$ 3,500.00	\$ 2,973.61	\$ (526.39)	\$ 2,968.00
<b>Telephone, email, etc.</b>	\$ 2,700.00	\$ 2,400.00	\$ 2,700.00	\$ 1,487.52	\$ (1,212.48)	\$ 1,690.00
<b>Website</b>						
Hosting	\$ 500.00	\$ -	\$ 500.00	\$ -	\$ (500.00)	\$ -
Web master	\$ 1,500.00	\$ 500.00	\$ 1,500.00	\$ -	\$ (1,500.00)	\$ -
<b>Subscriptions/Memberships</b>						
ECA membership	\$ 950.00	\$ 950.00	\$ 950.00	\$ 950.00	\$ -	\$ 950.00
Conference registration fees	\$ 800.00	\$ 800.00	\$ 800.00	\$ 75.00	\$ (725.00)	\$ 425.00
Newspapers	\$ 650.00	\$ -	\$ 650.00	\$ -	\$ (650.00)	
<b>J. Indirect Costs</b>	\$ -		\$ -	\$ -	\$ -	\$ -
N/A						
<b>TOTAL PROPOSED BUDGET</b>	\$ 156,100.00	\$ 139,500.00	\$ 156,100.00	\$ 122,154.57	\$ (33,945.43)	\$ 133,168.00
<b>REVENUE FOR 2021</b>						
Local government contributions	\$ 10,000.00					
Department of Energy grant	\$ 139,000.00					
RFCLOG carry-over	\$ 7,100.00					
<b>TOTAL</b>	\$ 156,100.00					

\*2020 Actual/Projected Expenses = actual January through September; projected October through December

STATE OF COLORADO

ROCKY FLATS STEWARDSHIP COUNCIL

The Board of Directors of the Rocky Flats Stewardship Council (“Stewardship Council”), State of Colorado, held a meeting via Webex on October 26, 2020, at the hour of 8:30 A.M., at which a quorum of the Board of Directors was present.

The Executive Director reported that prior to the meeting he had notified each of the Directors of the date, time and place of this meeting and the purpose for which it was called. He further reported that Notice of the Board Meeting has been posted in accordance with the Bylaws of the Stewardship Council and, to the best of his knowledge, remains posted to the date of this meeting.

Thereupon, Director \_\_\_\_\_, introduced and moved the adoption of the following Resolution:

RESOLUTION

A RESOLUTION SUMMARIZING EXPENDITURES AND REVENUES FOR THE GENERAL FUND AND ADOPTING A BUDGET AND APPROPRIATING SUMS OF MONEY TO THE GENERAL FUND IN THE AMOUNTS AND FOR THE PURPOSES SET FORTH HEREIN FOR THE ROCKY FLATS STEWARDSHIP COUNCIL, STATE OF COLORADO, FOR THE CALENDAR YEAR BEGINNING ON THE 1ST DAY OF JANUARY, 2021, AND ENDING ON THE LAST DAY OF DECEMBER, 2021.

WHEREAS, the proposed budget has been submitted to the Board of Directors of the Stewardship Council for its consideration; and

WHEREAS, upon due and proper notice, published in accordance with law as attached as Exhibit A, said proposed budget was open for inspection by the public at a designated place, a public hearing was held on October 26, 2020, and interested electors were given the opportunity to file or register any objections to said proposed budget; and

WHEREAS, the budget being adopted by the Board has been prepared based on the best information available to the Board regarding the effects of Article X, Section 20 of the Colorado Constitution; and

WHEREAS, whatever increases may have been made in the expenditures, like increases were added to the revenues so that the budget remains in balance, as required by law.

NOW, THEREFORE, BE IT RESOLVED BY THE BOARD OF DIRECTORS OF THE ROCKY FLATS STEWARDSHIP COUNCIL, STATE OF COLORADO:

Section 1. Summary of 2021 Revenues and 2021 Expenditures. That the estimated revenues and expenditures for the general fund for fiscal year 2021, as more specifically set forth in the budget attached hereto, are accepted and approved.

Section 2. Adoption of Budget. That the budget as submitted, amended, attached hereto and incorporated herein, is approved and adopted as the budget of the Rocky Flats Stewardship Council for fiscal year 2021.

Section 3. Appropriations. That the amounts set forth as expenditures and balances remaining, as specifically allocated in the budget, attached hereto, are hereby appropriated from the revenue of the general fund, to the general fund, for the purposes stated and no other.

Section 4. Budget Certification. That the budget shall be certified by Joyce Downing, Chair of the Board, and made a part of the public records of the Rocky Flats Stewardship Council.

The foregoing Resolution was seconded by Director \_\_\_\_\_.

RESOLUTION APPROVED AND ADOPTED THIS 26<sup>th</sup> DAY OF OCTOBER, 2020.

[Remainder of Page Intentionally Left Blank]



Signature Page to Rocky Flats Stewardship Council  
2021 Budget Resolution

ROCKY FLATS STEWARDSHIP COUNCIL

By: \_\_\_\_\_  
Joyce Downing, Chair

ATTEST:

By: \_\_\_\_\_  
Secretary

STATE OF COLORADO

ROCKY FLATS STEWARDSHIP COUNCIL

I, Joyce Downing, hereby certify that I am a Director and qualified Chair of the Rocky Flats Stewardship Council, and that the foregoing constitutes a true and correct copy of the record of proceedings of the Board of Directors of said Stewardship Council, adopted at a meeting of the Board of Directors of the Rocky Flats Stewardship Council held on October 26, 2020, via Webex, as recorded in the official record of the proceedings of the Stewardship Council, insofar as said proceedings relate to the budget hearing for fiscal year 2021; that said proceedings were duly had and taken; that the meeting was duly held; and that the persons were present at the meeting as therein shown.

IN WITNESS WHEREOF, I have hereunto subscribed my name and affixed the official seal of the Stewardship Council this 26<sup>th</sup> day of October, 2020.

---

Joyce Downing, Chair

**EXHIBIT A**

**NOTICE AS TO PROPOSED 2021 BUDGET**

NOTICE IS HEREBY GIVEN that a proposed budget has been submitted to the **ROCKY FLATS STEWARDSHIP COUNCIL** for the fiscal year 2021. A copy of such proposed budget has been filed in the office Seter & Vander Wall, P.C. 7400 East Orchard Road, Suite 3300, Greenwood Village, Colorado, where same is open for public inspection. Such proposed budget will be considered at a meeting of the Rocky Flats Stewardship Council to be held at 8:30 A.M. on Monday, October 26, 2020. The meeting will be held in a virtual format via Webex. Any interested party may inspect the proposed budget and file or register any objections at any time prior to the final adoption of the 2021 budget.

To help reduce the spread of COVID-19, the Stewardship Council encourages the Public and others to join the meeting via Webex. Please contact [info@rockyflatssc.org](mailto:info@rockyflatssc.org), for a link to the meeting invitation.

BY ORDER OF THE EXECUTIVE COMMITTEE:  
ROCKY FLATS STEWARDSHIP COUNCIL

By: /s/ SETER & VANDER WALL, P.C.  
Attorneys for the Council

Publish in: The Denver Post  
Publish on: Saturday, October 10, 2020

**ROCKY FLATS STEWARDSHIP COUNCIL  
2021 BUDGET MESSAGE**

**SUMMARY OF SIGNIFICANT ASSUMPTIONS**

Services Provided

The purpose of the Rocky Flats Stewardship Council, consistent with public health, safety and welfare, is to provide an effective mechanism for local governments in the vicinity of Rocky Flats and their citizens to work together on issues of mutual concern relating to the future use and long-term protection of Rocky Flats, and to serve as a focal point for local government communication and advocacy with state and federal agencies regarding Rocky Flats issues.

Revenue

The Stewardship Council receives its revenues from the Department of Energy; Rocky Flats Coalition of Local Governments; and Local Government contributions (Boulder County, Jefferson County, City and County of Broomfield, Cities of Arvada, Boulder, Golden, Northglenn, Thornton, and Westminster and Town of Superior).

Expenditures

The funds are used for G&A, overhead expenses, as well as costs incurred with buffer zone and stewardship planning processes.

The Stewardship Council prepares its budget on the modified accrual basis of accounting.

## **LSO Applications**

- Cover memo
- Applicants' Responses
  - Rocky Flats Cold War Museum (current member)
  - Kim Griffiths (current member)
  - Rocky Flats Public Health Advocates

# ROCKY FLATS STEWARDSHIP COUNCIL

P.O. Box 17670

(303) 412-1200

Boulder, CO 80308-0670

www.rockyflatssc.org

Jefferson County ~ Boulder County ~ City and County of Broomfield ~ City of Arvada ~ City of Boulder  
City of Golden ~ City of Northglenn ~ City of Thornton ~ City of Westminster ~ Town of Superior  
League of Women Voters ~ Rocky Flats Cold War Museum ~ Rocky Flats Homesteaders  
Kim Griffiths

## MEMORANDUM

**TO:** Board  
**FROM:** David Abelson  
**SUBJECT:** LSO Member Interviews  
**DATE:** October 14, 2020

---

At the October 26<sup>th</sup> meeting, the governments will interview and appoint two organizations/individual for seats on the Rocky Flats Stewardship Council. Under our governing documents, there are four community seats on the Board of Directors. They are currently held by League of Women Voters, Rocky Flats Homesteaders, Rocky Flats Cold War Museum, and Kim Griffiths. The terms are staggered and are for two years, commencing in February. Every year, two of those seats are subject to reappointment.

Three entities applied for membership:

Rocky Flats Cold War Museum (current member)  
Kim Griffiths (current member)  
Rocky Flats Public Health Advocates

The applicants' responses are attached.

**Action Item: Interview candidates and make the appointments**

## **Rocky Flats Stewardship Council 2021-2022 Membership Application**

**Name:** Arthur S. (Murph) Widdowfield

**Name of organization represented (if applicable):** Rocky Flats Cold War Museum

**Address:** 7385 Quartz Street, Arvada, CO 80007-7632

**Telephone:** 303-904-4094 (home); 303-910-3104 (cell); museum phone: 720-287-1717

**Email:** [murphwid@gmail.com](mailto:murphwid@gmail.com)

**Title (if applicable):** President of the Board

**Membership category:** Historic Preservation (museum)

**Number of individuals/groups your organization represents:** 600 to 800 estimated

### **Time Commitment**

We do not have any time constraints and can have a representative at all meetings. Our members have a very strong foundation on the history of the site, cleanup and monitoring activities. Our organization is committed to tell the complete story of Rocky Flats.

### **Assignment of Director and Alternate Directors**

Meeting attendance is vitally important so each organization must be able to appoint a Director and up to two Alternate Directors to serve in the absence of the Director. Our Director and Alternate Director are indicated below.

**Director:** Murph Widdowfield

**Alternate:** Ken Freiberg

**Bio: Arthur S. (Murph) Widdowfield**

Murph has a background in heavy construction and engineering and was the President, GM of a construction company for over twenty years. Contracts included the mining and milling operations for copper, molybdenum, uranium, precious minerals and others. The company also built and maintained power plant, refinery and other heavy industrial operations that included the Rocky Mountain Arsenal and Rocky Flats Nuclear Weapons Plant. He has been a Jefferson County resident since 1948, graduated from Wheat Ridge High School and spent three years in the U.S. Army in Germany. His college background is in engineering, construction management and law and estimating. He has had many roles during his 32 years in Lakewood Rotary Club and has served as a volunteer for the National Western Stock Show, Red Cross, Rocky Mountain Horse Expo and many other small organizations as well as the Rocky Flats Museum.



He became part of the Rocky Flats Stewardship Council about ten years ago as a community member and was then asked to become a board member of the Rocky Flats Cold War Museum. He has served the museum as a board member, treasurer and president. He has helped to create exhibits, organize volunteer working sessions and has done many presentations on Rocky Flats for school, college and community groups

**Bio: Ken Freiberg**

Ken became employed by Dow Chemical Co in 1953. He was Construction Manager and later Manager of Building Maintenance. He remained at Rocky Flats during the tenure of Dow Chemical Co., Rockwell International Co., EG&G and also Kaiser-Hill. He served thirty-two years in the U.S. Air Force and Air National Guard

## **Statement of Interest**

Members of the board of the Rocky Flats Cold War Museum have struggled to save the history of the former nuclear weapons plant since 1999 and incorporated as a 501c3 non-profit in 2001. The boards goal has always been to save the entire history of Rocky Flats, including activities of various activist groups. No other museum has been working to save Rocky Flats artifacts and other historic materials for the public. The board has collaborated with the Boulder Library's Maria Rogers Oral History Program on a large collection of interviews with former Rocky Flats workers, political leaders and activists. These interviews are online and available to the public. The interviews offer insight, anecdotes and details about Rocky Flats history that are compelling and shed light on a formerly secret government operation.

Several of the board members are former Rocky Flats workers, one heads the Rocky Flats Homesteaders and another is an International Museum Consultant. Four are representatives of the companies that provide health care for ex-workers under the EEOICPA (Energy Employees Occupational Illness Compensation Program Act). All board members have a fairly extensive knowledge of Rocky Flats history and issues. Board members have given many talks and programs each year to school and civic groups about Rocky Flats, the Oral History Project and the museum development. We want to monitor Rocky Flats long-term stewardship issues that arise on the Stewardship Council and also provide information to the public through our Facebook page, Web site and personal outreach.

The museum gave some of its artifacts to the U.S. Department of Energy to place in the proposed Visitor Center to be built on the Rocky Flats Wildlife Refuge. Board members hope to volunteer at the center when it opens, to provide accurate information about the plants history and site, since some misinformation, rumor and speculation have been part of the public dialogue.



## Conflict of Interest Statement

To maintain public trust and accountability, all applicants must identify any conflict of interest or a potential conflict of interest. "Conflict of Interest" is broadly defined as (1) having a direct financial interest in any issue related to the management of Rocky Flats and/or (2) currently being engaged in a lawsuit against the Department of Energy, the Department of Interior, Jefferson County, Boulder County, The City and County of Broomfield, the cities of Arvada, Boulder, Golden, Northglenn, Thornton, and Westminster, and the Town of Superior. Any such conflicts must be listed below.

The Rocky Flats Cold War Museum has no such conflict of interest.

A. S. (Murphy) Widdowfield Kenney J. Freiberger  
Signature Signature

A. S. (Murphy) Widdowfield Kenney J. Freiberger 9-9-2020  
Print Name/Date Board President Print Name/Date  
9/8/20

# ROCKY FLATS STEWARDSHIP COUNCIL

P.O. Box 17670  
Boulder, CO 80308-0670  
www.rockyflatssc.org

(303) 412-1200

Jefferson County ~ Boulder County ~ City and County of Broomfield ~ City of Arvada ~ City of Boulder  
City of Golden ~ City of Northglenn ~ City of Thornton ~ City of Westminster ~ Town of Superior  
League of Women Voters ~ Rocky Flats Cold War Museum ~ Rocky Flats Homesteaders  
Kim Griffiths

## **Membership Application, 2021-2022**

### **Background**

The Rocky Flats Stewardship Council formed in February 2006 to provide ongoing local government and community engagement on the post-closure management of Rocky Flats, the former nuclear weapons plant northwest of Denver. The \$7 billion cleanup was completed in October 2005 and represents an important legacy for our communities. Cleanup significantly reduced the many risks. Ongoing management by the Department of Energy (DOE) remains vital to ensuring long-term protection of human health and the environment.

The Stewardship Council is an independent body organized under Colorado law. In late 2004, the United States Congress approved legislation authorizing the creation of Local Stakeholder Organizations (LSO) at Rocky Flats and two sites in Ohio. The Stewardship Council's central focus is serving as the DOE-designated LSO for Rocky Flats. Our mission is to provide continuing local engagement on activities at Rocky Flats regarding long-term stewardship of residual contamination and refuge management. We also track issues related to former site employees, and work with the United States Fish and Wildlife Service on the development and management of the Rocky Flats National Wildlife Refuge.

The Stewardship Council Board of Directors includes elected officials from ten local governments neighboring Rocky Flats, and up to four non-governmental parties. The current membership is listed on the masthead (see above).

In Fall 2020, the member governments will appoint members to two of the four non-governmental seats. Terms start at the February 2021 meeting and run for two years.

### **Membership**

In determining membership, the Stewardship Council is committed to balancing those with knowledge of Rocky Flats with adding new perspectives and engaging new constituencies. In 2005, following the passage of the LSO legislation, DOE identified the following characteristics to guide membership of the non-governmental members:

1. Impacted by and interested in a majority of the scope topic areas of the Stewardship Council
2. Willingness to invest time and energy on all of the topic areas
3. Some familiarity with Rocky Flats history, the cleanup process, etc.
4. Represent a broad constituency with a wide diversity of viewpoints
5. Bring new ideas to the table

In developing a broad constituency, there are various potential membership categories:



1. Academic institution
2. Business
3. Former Rocky Flats worker
4. Historic preservation
5. Landowner/asset holder (Candelas resident)
6. Public interest/environmental group
7. Student
8. Technical expertise
9. Other

**Application Deadline:** Thursday, October 1, 2020 (email and mail only). Interviews will take place on Monday, October 26, 2020, in the morning.

**Provide the following information**

Name Kim Griffiths  
 Name of organization represented (if applicable)  
 Address 15589 W 95th Pl Arvada, CO  
 Telephone 303-916-5696  
 Email kagriff.kg@gmail.com  
 Title (if applicable)  
 Membership category non-governmental  
 Number of individuals/groups your organization represents

**Address the following questions**

1. Time Commitment: On average, Board members spend 5-10 hours per month working on Stewardship Council issues. They also attend five Board meetings per year. Board meetings are Monday mornings from 8:30 – 11:30 AM. Members who lack a solid foundation on Rocky Flats issues will likely need to spend time developing a strong foundation on the history of the site, cleanup, and monitoring activities since closure in 2006.

Questions to answer:

- a. How much time will you/your organization be able to commit towards this effort?
- b. Are there any time constraints you/your organization may face?

Please explain.

2. Assignment of Director and Alternate Director(s): Meeting attendance is vitally important so each organization must appoint a Director, and up to two Alternate Directors to serve in the absence of the Director.

Information Need: If you are applying on behalf of an organization, please indicate who will serve as the Director and Alternate Director(s)? Attach a short bio for each person.

Persons applying for membership as individuals are not permitted to appoint Alternate Directors. Please attach a short bio. (Candelas resident who has served a one and two-year term)

3. Statement of Interest: Write a statement explaining your organization's interest/individual interest in serving, and membership category. Please discuss any relevant experience, education, expertise, or special skills that would serve the Stewardship Council's mission, including any Rocky Flats experience. (see attached)
  
4. Conflict of Interest Statement: To maintain public trust and accountability, all applicants must identify any conflict of interest or a potential conflict of interest. "Conflict of interest" is broadly defined as (1) having a direct financial interest in any issue related to the management of Rocky Flats, and/or (2) currently being engaged in a lawsuit against the Department of Energy, the Department of the Interior, Jefferson County, Boulder County, the City and County of Broomfield, the cities of Arvada, Boulder, Golden, Northglenn, Thornton, and Westminster, or the Town of Superior.

Information Need: Please list any such conflicts or potential conflicts. No conflicts of interest

  
 Signature

\_\_\_\_\_  
 Signature\*

Kim Griffiths/Sept. 25,2020  
 Print name/date

\_\_\_\_\_  
 Print name/date

\*If you are submitting the application on behalf of an organization, both the Director and one Alternate Director must sign the application.

If you have any questions, please contact:  
 David Abelson  
 Executive Director, Rocky Flats Stewardship Council  
 (303) 412-1200  
[dabelson@rockyflatssc.org](mailto:dabelson@rockyflatssc.org)

## Statement of Interest

Kim Griffiths

Rocky Flats Stewardship Council

September 28, 2020

Please accept my application for continued involvement as a local stakeholder on the Rocky Flats Stewardship Council. I have previously served a one and a two-year term on the Council and have attended all meetings during my tenure.

As I reflect on my participation over the last three years, I have come to a number of conclusions. It appears that despite a compelling amount of factual data regarding the safety of the area I call home, no amount of science and data is a match for tribalism and ideological entrenchment. We're living in different realities, one that accepts science and facts from legitimate sources, and another where truth is whatever validates your prejudices, feeds your sense of grievance, and fuels your antipathy towards the people you've decided are on some other side. This creates a continuous stream of disinformation and conspiracy theories. Examples include secretly buried drums of contaminants and self-proclaimed public health emergencies which according to these sources should result in the closure of the Rocky Flats Wildlife Refuge and halt the construction of the Jefferson Parkway. It all seems rather quaint in some ways currently as we live through a real public health emergency during a global pandemic.

All that said, I recognize that additional science or data will not likely persuade this group of individuals of the confirmed safety. The thing I find most unnerving is their municipal government enablers, who undermine faith in the science and data. Collectively, those who take these positions either do not comprehend or are indifferent to the impact of their unsubstantiated statements on the people who live, work, and play in and around areas adjacent to Rocky Flats. We have accepted the voluminous amount of data regarding the safety of the place we call home, and frankly we feel more informed about the water and soil safety in our neighborhood than many other people.

It has been suggested by some that my involvement with the Stewardship Council is primarily a concern for property values in Candelas. I can assure you that has not been a concern of mine, in fact property values have consistently increased and are up over 3 percent year-to-date despite the ongoing disinformation campaign. My motivation is simple - it is unfair and unjust to denigrate an entire area based on false and unsubstantiated information.

In closing and with a grateful heart, I would like to recognize and thank the people who so professionally perform their job to provide subject matter expertise and the data we rely on:

- Department of Energy and the Navarro team
- Colorado Department of Public Health and Environment
- US Fish and Wildlife
- Jefferson Parkway Authority
- David Abelson and the team he has assembled to conduct the business of the Rocky Flats Stewardship Council

I am totally confident that the information shared by these entities is validated and accurate. Should there be an occurrence that indicates unsafe levels of any analyte, as in the 2019 soil sample, I trust that the information will be promptly shared with the Council and the public.

I thank you for your consideration and I would be honored to accept your vote for my continued inclusion on the Rocky Flats Stewardship Council.

Rocky Flats Public Health Advocates  
October 1, 2020

Mr. David Abelson  
Executive Director  
Rocky Flats Stewardship Council  
(via email to [dabelson@rockyflatssc.org](mailto:dabelson@rockyflatssc.org))

Dear Mr. Abelson,

Thank you for the opportunity to apply for a community representative seat on the Rocky Flats Stewardship Council's Board of Directors.

Enclosed herewith please find a completed and signed application form from an organization named Rocky Flats Public Health Advocates. Answers to questions in the application form are provided inline in the form, in red text. I would be the Director from this organization, and Ramona Gaylord (copied) would be the Alternate Director.

We look forward to the interview process via Webex on the morning of Monday October 26<sup>th</sup>. Thank you once again for the opportunity.

Sincerely,  
Randy Stafford, Executive Director  
Rocky Flats Public Health Advocates

# ROCKY FLATS STEWARDSHIP COUNCIL

P.O. Box 17670

(303) 412-1200

Boulder, CO 80308-0670

www.rockyflatssc.org

Jefferson County ~ Boulder County ~ City and County of Broomfield ~ City of Arvada ~ City of Boulder  
City of Golden ~ City of Northglenn ~ City of Thornton ~ City of Westminster ~ Town of Superior  
League of Women Voters ~ Rocky Flats Cold War Museum ~ Rocky Flats Homesteaders  
Kim Griffiths

## **Membership Application, 2021-2022**

### **Background**

The Rocky Flats Stewardship Council formed in February 2006 to provide ongoing local government and community engagement on the post-closure management of Rocky Flats, the former nuclear weapons plant northwest of Denver. The \$7 billion cleanup was completed in October 2005 and represents an important legacy for our communities. Cleanup significantly reduced the many risks. Ongoing management by the Department of Energy (DOE) remains vital to ensuring long-term protection of human health and the environment.

The Stewardship Council is an independent body organized under Colorado law. In late 2004, the United States Congress approved legislation authorizing the creation of Local Stakeholder Organizations (LSO) at Rocky Flats and two sites in Ohio. The Stewardship Council's central focus is serving as the DOE-designated LSO for Rocky Flats. Our mission is to provide continuing local engagement on activities at Rocky Flats regarding long-term stewardship of residual contamination and refuge management. We also track issues related to former site employees, and work with the United States Fish and Wildlife Service on the development and management of the Rocky Flats National Wildlife Refuge.

The Stewardship Council Board of Directors includes elected officials from ten local governments neighboring Rocky Flats, and up to four non-governmental parties. The current membership is listed on the masthead (see above).

In Fall 2020, the member governments will appoint members to two of the four non-governmental seats. Terms start at the February 2021 meeting and run for two years.

### **Membership**

In determining membership, the Stewardship Council is committed to balancing those with knowledge of Rocky Flats with adding new perspectives and engaging new constituencies. In 2005, following the passage of the LSO legislation, DOE identified the following characteristics to guide membership of the non-governmental members:

1. Impacted by and interested in a majority of the scope topic areas of the Stewardship Council
2. Willingness to invest time and energy on all of the topic areas
3. Some familiarity with Rocky Flats history, the cleanup process, etc.
4. Represent a broad constituency with a wide diversity of viewpoints
5. Bring new ideas to the table

In developing a broad constituency, there are various potential membership categories:



1. Academic institution
2. Business
3. Former Rocky Flats worker
4. Historic preservation
5. Landowner/asset holder
6. Public interest/environmental group
  
7. Student
8. Technical expertise
9. Other

**Application Deadline:** Thursday, October 1, 2020 (email and mail only). Interviews will take place on Monday, October 26, 2020, in the morning.

**Provide the following information**

Name: **Randy Stafford**

Name of organization represented (if applicable): **Rocky Flats Public Health Advocates**

Address: **10461 West Indore Drive, Littleton, CO 80127**

Telephone: **303-810-2644**

Email: **randy.stafford@comcast.net**

Title (if applicable): **Executive Director**

Membership category: **Public interest group**

Number of individuals/groups your organization represents: **~100,000**

**Address the following questions**

1. Time Commitment: On average, Board members spend 5-10 hours per month working on Stewardship Council issues. They also attend five Board meetings per year. Board meetings are Monday mornings from 8:30 – 11:30 AM. Members who lack a solid foundation on Rocky Flats issues will likely need to spend time developing a strong foundation on the history of the site, cleanup, and monitoring activities since closure in 2006.

Questions to answer:

a. How much time will you/your organization be able to commit towards this effort? **As much as is required; certainly the monthly average plus the five Board meetings per year.**

b. Are there any time constraints you/your organization may face? **No.**

Please explain.

2. Assignment of Director and Alternate Director(s): Meeting attendance is vitally important so each organization must appoint a Director, and up to two Alternate Directors to serve in the absence of the Director.

Information Need: If you are applying on behalf of an organization, please indicate who will serve as the Director and Alternate Director(s)? Attach a short bio for each person.

Director: Randy Stafford

Bio: Randy Stafford is a Senior Manager at Oracle, with a 32-year career in software architecture. He holds a Bachelor of Science degree in Applied Mathematics, with graduate coursework in Computer Science, from Colorado State University. Mr. Stafford has contributed to four books on software architecture and speaks frequently at software conferences. His mother grew up in Arvada, and her siblings worked at Rocky Flats. Mr. Stafford served on the Jefferson Parkway Advisory Committee and contributed a chapter to the recent book *Doom with a View: Historical and Cultural Contexts of the Rocky Flats Nuclear Weapons Plant*.

Alternate Director: Ramona Gaylord

Bio: Ramona Gaylord is a science educator based in Telluride, CO. She graduated from Colorado State University with a B.S. in Microbiology, and the University of Hawaii with a Master of Education in Secondary Science Education. She works for Astavo Online Academy as a biology teacher. Ramona has been a biology/science teacher consultant with Telluride Public School/Telluride Mountain School since 2007. She has also been a biologist consultant with Bridal Veil Living Classroom at the Telluride Institute from 2006-2015. While she was at the Pinhead Institute from 2002-2007, she created "Biodiversity through Art," depicting the indigenous residents of the Telluride valley; the Gunnison's prairie dogs and the Ute Indians, and culminating with a display in Elks Park with a painted tipi, bronze sculptures, acrylic range maps and life-size clay prairie dog replicas. Ramona grew up in the Denver area and witnessed the relentless destruction of prairie habitat and wildlife during her youth and believes that buying prairie habitat is the best way to forever protect it. She has been a board member of the Southern Plains Land Trust, a native prairie conservation non-profit for 10 years.

Persons applying for membership as individuals are not permitted to appoint Alternate Directors. Please attach a short bio.

3. **Statement of Interest:** Write a statement explaining your organization's interest/individual interest in serving, and membership category. Please discuss any relevant experience, education, expertise, or special skills that would serve the Stewardship Council's mission, including any Rocky Flats experience.

Categorized as a public interest group, Rocky Flats Public Health Advocates (RFPHA) is an issue advocacy organization whose primary purpose is to advocate for the protection of public health from Rocky Flats contamination, with respect to land use, management, and development at or near the Rocky Flats site.

RFPHA is interested in serving on the Rocky Flats Stewardship Council (RFSC) to help execute its mission and leverage its purposes as stated in its establishing Inter-Governmental Agreement, with certain emphases. To wit, the first stated mission of RFSC is "to provide continuing local engagement on activities occurring at the Rocky Flats site (defined as 'the entire former Rocky Flats nuclear weapons site ... inclusive of the entire Rocky Flats National Wildlife Refuge) regarding long-term stewardship of residual contamination and refuge management." RFPHA desires to engage on activities occurring at the site, bringing a voice advocating for the protection of public health.

Similarly, two of RFSC's purposes are "to provide a forum for elected officials and community members to discuss with federal, state, and local elected officials and agencies issues related to the long-term stewardship and management of the Rocky Flats site," and "to provide a forum for USFWS staff to work with elected officials and community members on issues related to the management of resources under that agency's jurisdiction." RFPHA desires to leverage the forum provided by these RFSC purposes to participate in discussion of issues related to management of the site, and to work with USFWS on resource management issues, again bringing a voice advocating for the protection of public health.

RFPHA's Director and Alternate Director have relevant experience and education that would serve the Stewardship Council's mission. Mr. Stafford served on the Jefferson Parkway Advisory Committee and extensively surveyed all past studies of offsite (outside the Central Operable Unit) plutonium soil contamination, and all past studies of cancer incidence in the surrounding population. These surveys ultimately culminated in a chapter in a new book about Rocky Flats. Ms. Gaylord is a subject matter expert on indigenous prairie dogs and could advise RFSC and USFWS on matters of prairie dog translocation. A native of Wheat Ridge, Colorado, Ms. Gaylord has been acutely aware of Rocky Flats for decades, having read every extant book about its history. Both Mr. Stafford and Ms. Gaylord have significant experience on organization Boards.

4. Conflict of Interest Statement: To maintain public trust and accountability, all applicants must identify any conflict of interest or a potential conflict of interest. "Conflict of interest" is broadly defined as (1) having a direct financial interest in any issue related to the management of Rocky Flats, and/or (2) currently being engaged in a lawsuit against the Department of Energy, the Department of the Interior, Jefferson County, Boulder County, the City and County of Broomfield, the cities of Arvada, Boulder, Golden, Northglenn, Thornton, and Westminster, or the Town of Superior.

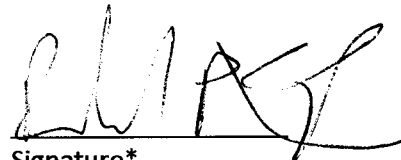
Information Need: Please list any such conflicts or potential conflicts.

Neither Rocky Flats Public Health Advocates as an organization, nor Randy Stafford nor Ramona Gaylord have any conflicts of interest or potential conflicts of interest as defined above.

3. Statement of Interest: Write a statement explaining your organization's interest/individual interest in serving, and membership category. Please discuss any relevant experience, education, expertise, or special skills that would serve the Stewardship Council's mission, including any Rocky Flats experience.
  
4. Conflict of Interest Statement: To maintain public trust and accountability, all applicants must identify any conflict of interest or a potential conflict of interest. "Conflict of interest" is broadly defined as (1) having a direct financial interest in any issue related to the management of Rocky Flats, and/or (2) currently being engaged in a lawsuit against the Department of Energy, the Department of the Interior, Jefferson County, Boulder County, the City and County of Broomfield, the cities of Arvada, Boulder, Golden, Northglenn, Thornton, and Westminster, or the Town of Superior.

Information Need: Please list any such conflicts or potential conflicts.

\_\_\_\_\_  
Signature

  
Signature\*

\_\_\_\_\_  
Print name/date

RANDY STAFFORD / 10/1/20  
Print name/date

\*If you are submitting the application on behalf of an organization, both the Director and one Alternate Director must sign the application.

If you have any questions, please contact:  
David Abelson  
Executive Director, Rocky Flats Stewardship Council  
(303) 412-1200  
[dabelson@rockyflatssc.org](mailto:dabelson@rockyflatssc.org)

3. **Statement of Interest:** Write a statement explaining your organization's interest/individual interest in serving, and membership category. Please discuss any relevant experience, education, expertise, or special skills that would serve the Stewardship Council's mission, including any Rocky Flats experience.
4. **Conflict of Interest Statement:** To maintain public trust and accountability, all applicants must identify any conflict of interest or a potential conflict of interest. "Conflict of interest" is broadly defined as (1) having a direct financial interest in any issue related to the management of Rocky Flats, and/or (2) currently being engaged in a lawsuit against the Department of Energy, the Department of the Interior, Jefferson County, Boulder County, the City and County of Broomfield, the cities of Arvada, Boulder, Golden, Northglenn, Thornton, and Westminster, or the Town of Superior.

**Information Need:** Please list any such conflicts or potential conflicts.

*Ramona Gaylord*

Signature

\_\_\_\_\_  
Signature\*

*Ramona Gaylord/Oct. 1, 2020*

Print name/date

\_\_\_\_\_  
Print name/date

\*If you are submitting the application on behalf of an organization, both the Director and one Alternate Director must sign the application.

If you have any questions, please contact:

David Abelson

Executive Director, Rocky Flats Stewardship Council

(303) 412-1200

[dabelson@rockyflatssc.org](mailto:dabelson@rockyflatssc.org)

# Appendix

- Acronym List



Rocky Flats Acronym List  
 Prepared for the Rocky Flats Stewardship Council  
 Rev. 02/20

Acronym or Term	Means	Definition
Alpha radiation		A type of radiation that is not very penetrating and can be blocked by materials such as human skin or paper or one inch of air. Alpha radiation presents its greatest risk when it is inhaled or ingested. Plutonium, the radioactive material of greatest concern at Rocky Flats, produces this type of radiation.
Am	americium	A man-made radioactive element that is a byproduct of plutonium (Pu) production. Am emits gamma radiation, which can penetrate many types of protective shielding. During the production era at Rocky Flats, Am was chemically separated from Pu to reduce personnel exposures.
AME	Actinide Migration Evaluation	An exhaustive, years-long study by independent researchers who studied how actinides such as plutonium, americium, and uranium move through the soil and water at Rocky Flats.
AMP	Adaptive Management Plan	Additional water quality sampling and analysis that DOE is conducting, beyond the normal environmental assessments, to inform decisions regarding future breaches of remaining dams.
AOC well	Area of Concern well	A particular type of groundwater well.
B	boron	An inorganic compound that has been found in some surface water and groundwater samples at Rocky Flats.
Be	beryllium	A very strong and lightweight metal that was used at Rocky Flats in the manufacture of nuclear weapons. Exposure to beryllium is now known to cause respiratory disease in those persons sensitive to it.
Beta radiation		A type of radiation that is more penetrating than alpha (but less penetrating than gamma). Beta particles can be stopped after traveling through 10 feet of air or a thin layer of glass or metal. Some forms of uranium emit beta radiation.
BMP	Best Management Practices	A term used to describe actions taken by DOE that are not required by regulation but warrant action.
BZ	Buffer Zone	The portion of the Rocky Flats site that was added during production to provide a "buffer" between the neighboring communities and the industrial portion of Rocky Flats. The buffer zone covered approximately 6,100 acres. Most of the buffer zone lands now make up the Rocky Flats National Wildlife Refuge.
CAD/ROD	Corrective Action Decision/Record of Decision	The complete final plan for cleanup and closure for Rocky Flats. The Federal/State laws that governed the cleanup at Rocky Flats required a document of this sort.
CCP	Comprehensive Conservation Plan	The refuge plan adopted by the U.S. Fish and Wildlife Service in 2007.
CDPHE	Colorado Department of Public Health and Environment	The state agency that regulates Rocky Flats.

Rocky Flats Acronym List  
 Prepared for the Rocky Flats Stewardship Council  
 Rev. 02/20

Acronym or Term	Means	Definition
CERCLA	Comprehensive Environmental Response, Compensation and Liability Act	Federal legislation that governs the Rocky Flats cleanup. Also known as the Superfund Act.
cfs	cubic feet per second	A volumetric measure of water flow.
COC	Contaminant of Concern	A hazardous or radioactive substance that is present at Rocky Flats.
COU	Central Operable Unit	A CERCLA term used to describe the DOE-retained lands (about 1,300 acres) at Rocky Flats. The COU overlays the former Industrial Area (where manufacturing activities took place) and contains all engineered elements of the remedy (two landfills and four groundwater treatment systems) and areas of residual subsurface contamination.
CR	Contact Record	A regulatory procedure where CDPHE reviews a proposed action by DOE and either approves the proposal as is or requires changes to the proposal before approval. CRs apply to a wide range of activities performed by DOE. After approval, the CR is posted on the DOE-Legacy Management (LM) website and the public is notified via email.
Cr	chromium	Potentially toxic metal used at Rocky Flats.
CRA	Comprehensive Risk Assessment	A series of analyses that assess human health risks and risks to the environment (flora and fauna).
D&D	decontamination and decommissioning	The process of cleaning up and tearing down buildings and other structures.
DG	Discharge Gallery	The location where the treated effluent of the Solar Ponds Plume Treatment System (defined below) empties into North Walnut Creek.
DOE	U.S. Department of Energy	The federal agency that manages portions of Rocky Flats. The site office is the Office of Legacy Management (LM).
EA	Environmental Assessment	A study required by NEPA (defined below) when a federal agency proposes an action that could impact the environment. The agency is responsible for conducting the analysis to determine what, if any, impacts to the environment might occur due to a proposed action.
EIS	Environmental Impact Statement	An evaluation that is undertaken by a government agency when it is determined, via the EA, that a proposed action by the agency may have significant impacts to the environment.
EPA	U.S. Environmental Protection Agency	The federal agency that regulates Rocky Flats activities.
EEOICPA	Energy Employees Occupational Illness Compensation Program Act	An act passed by Congress in 2000 to compensate sick nuclear weapons workers and certain survivors.



Acronym or Term	Means	Definition
ETPTS	East Trenches Plume Treatment System	The treatment system near the location of the East Waste Disposal Trenches. This system treats groundwater emanating from the trenches that is contaminated with organic solvents, as well as groundwater routed from the Mound Plume Site Collection System. Treated effluent flows into South Walnut Creek.
FC	functional channel	Man-made stream channels constructed during cleanup to help direct water flow.
FACA	Federal Advisory Committee Act	The federal law that regulates federal advisory boards. The law requires balanced membership and open meetings with published Federal Register meeting dates.
Gamma Radiation		The most penetrating type of radiation at Rocky Flats. Thick, dense shielding is necessary to protect against gamma rays. Americium (Am) is a strong gamma emitter.
GAO	Government Accountability Office	Congressional investigative office that reports to Congress.
g	gram	A metric unit of mass.
gpm	gallons per minute	A volumetric measure of water flow.
GWIS	Groundwater Intercept System	A below-ground system that directs contaminated groundwater toward the Solar Ponds Plume and East Trenches Plume Treatment Systems.
IA	Industrial Area	The central core of Rocky Flats where all manufacturing activities took place. The IA covered 385 of Rocky Flats's 6,500 acres.
IC	Institutional Control	Administrative and legal controls employed to protect the integrity of the remedies in place and minimize the potential for human exposure to residual contamination.
IGA	intergovernmental agreement	A cooperative agreement between local governments that establishes the framework of the Stewardship Council.
IHSS	Individual Hazardous Substance Site	A name given during cleanup to a discrete area of known or suspected contamination. There were formerly over two hundred IHSSs at Rocky Flats.
ITPH	interceptor trench pump house	The location where contaminated groundwater collected by the interceptor trench is pumped to either the Solar Ponds Plume Treatment System or the East Trenches Plume Treatment System.
L	liter	Metric measure of volume (slightly larger than a quart).
LANL	Los Alamos National Laboratory	One of the US government's premier research institutions located near Santa Fe, NM. LANL is continuing to conduct highly specialized water analysis for Rocky Flats. Using sophisticated techniques, LANL is able to determine the percentages of both naturally occurring and man-made uranium, which helps to inform water quality decisions.
LHSU	lower hydrostratigraphic unit	Hydrogeological term for deep unweathered bedrock that is hydraulically isolated from the upper hydrostratigraphic unit (see UHSU). Data show that site COCs have not contaminated the LHSU.

Rocky Flats Acronym List  
 Prepared for the Rocky Flats Stewardship Council  
 Rev. 02/20

Acronym or Term	Means	Definition
LM	Legacy Management	DOE office responsible for overseeing activities at closed sites.
LMPIP	Legacy Management Public Involvement Plan	A plan that follows DOE and EPA guidance on public participation and outlines the methods of public involvement and communication used to inform the public of site conditions and activities. It was previously known as the Post-Closure Public Involvement Plan (PCPIP).
O&M/OM&M	Operations, monitoring, and maintenance	Term that describes ongoing activities at Rocky Flats.
MOU	Memorandum of Understanding	The formal agreement between EPA and CDPHE specifying that CDPHE is the lead post-closure regulatory agency with EPA providing assistance when needed.
MSPCS	Mound Site Plume Collection System	The system that collects groundwater and routes it to the ETPTS for treatment.
MSPTS	Mound Site Plume Treatment System	The remediation system formerly in place (reconfigured in 2016) to treat groundwater contaminated with organic solvents emanating from the Mound Site (a portion of Rocky Flats where waste barrels were buried).
NEPA	National Environmental Policy Act	Federal legislation that requires the federal government to perform analyses of environmental consequences of major projects or activities.
nitrates		Contaminant of concern originating from Solar Ponds wastes. Nitrates have been detected in the North Walnut Creek drainage. Nitrates are very soluble in water and move readily through the aquatic environment.
Np	neptunium	A man-made radioactive isotope that is a by-product of nuclear reactors and plutonium production.
NPL	National Priorities List	A list of Superfund sites. The refuge lands were de-listed from the NPL, while the DOE-retained lands are still on the NPL because of residual groundwater contamination and associated remediation activities.
NWCS	North Walnut Creek Slump	Slumping observed on the hillside east of the Solar Ponds Plume Treatment System.
OLF	Original Landfill	Hillside dumping area of about 20 acres that was used from 1951 to 1968. The OLF underwent remediation with the addition of a soil cap and groundwater monitoring locations.
OU	Operable Unit	A distinct area within a cleanup site. These areas may address geographic areas, specific problems, or medium (e.g., groundwater, soil) where a specific action is required.
PCE	perchloroethylene (a.k.a. tetrachloroethylene)	A volatile organic solvent used in past operations at Rocky Flats.
pCi/g	picocuries per gram	A unit of radioactivity in soil.
pCi/L	picocuries per liter	A unit of radioactivity in water. CDPHE's regulatory limit for Pu and Am in surface water at Rocky Flats is 0.15 pCi/L. This standard is 100 times stricter than the EPA's drinking water standard.

Rocky Flats Acronym List  
 Prepared for the Rocky Flats Stewardship Council  
 Rev. 02/20

Acronym or Term	Means	Definition
PLF	Present Landfill	Landfill constructed in 1968 to replace the OLF. During site remediation, the PLF was closed under RCRA regulations with an extensive cap and monitoring system.
PMJM	Preble's Meadow Jumping Mouse	A species of mouse found along the Front Range that is on the endangered species list. There are several areas in the Refuge and COU that provide adequate habitat for the mouse, usually found in drainages. Any operations that are planned in potential mouse habitat are strictly controlled.
POC	Point of Compliance (surface water)	A surface water monitoring location at Rocky Flats where contaminant concentrations must be in compliance with federal and state standards for hazardous constituents. Violations of water quality standards at the points of compliance could result in DOE receiving financial penalties.
POE	Point of Evaluation (surface water)	A surface water monitoring location at Rocky Flats where water quality is monitored. There are no financial penalties associated with water quality exceedances at these locations, but DOE may be required to develop a plan of action to improve the water quality.
POU	Peripheral Operable Unit	A CERCLA term used to describe the 4,800-acre area surrounding the Central Operable Unit.
Pu	plutonium	A metallic substance that was fabricated to form the core, or "trigger", of a nuclear weapon. Formation of these triggers was the primary production mission of the Rocky Flats site. There are different forms of plutonium, called isotopes. Each isotope is known by a different number, such as plutonium 239 (Pu-239) and plutonium 241 (Pu-241). Pu-239 is the primary radioactive COC at Rocky Flats.
RCRA	Resource Conservation and Recovery Act	Federal law regulating hazardous waste. In Colorado, EPA delegates to CDPHE the authority to regulate hazardous wastes.
RFCA	Rocky Flats Cleanup Agreement	The regulatory agreement that governed cleanup activities. DOE, EPA, and CDPHE were signatories.
RFCAB	Rocky Flats Citizen Advisory Board	The group formed as part of DOE's site-specific advisory board network. The RFCAB provided community feedback to DOE on a wide variety of Rocky Flats issues from 1993 through regulatory closure in 2006.
RFCLOG	Rocky Flats Coalition of Local Governments	The predecessor organization of the Rocky Flats Stewardship Council.
RFETS	Rocky Flats Environmental Technology Site	The moniker for Rocky Flats during cleanup years.
RFLMA	Rocky Flats Legacy Management Agreement	The post-cleanup regulatory agreement between DOE, CDPHE, and EPA that governs site activities. The CDPHE has the lead regulatory role, with support from EPA as required.
RFNWR	Rocky Flats National Wildlife Refuge	The 4,000 acres of Rocky Flats where unrestricted use is allowed. This land is now a wildlife refuge.

Rocky Flats Acronym List  
 Prepared for the Rocky Flats Stewardship Council  
 Rev. 02/20

Acronym or Term	Means	Definition
RFSOG	Rocky Flats Site Operations Guide	The nuts-and-bolt guide for post-closure site activities performed by DOE and its contractors.
RSAL	Radionuclide Soil Action Level	Concentration of radionuclide in soil above which remedial action should be considered so that people are not exposure to radiation doses above permitted levels.
SEP	Solar Evaporation Ponds	An area of Rocky Flats used in the 1950s to hold excess wastewater generated during manufacturing operations. Wastewater that could not be treated in the onsite treatment plant was sent to open-air holding ponds where solar energy was utilized to evaporate and concentrate the waste. The original SEPs were unlined, and substantial quantities of uranium and nitrates made their way into groundwater. As a result, the Solar Ponds Plume Treatment System was constructed to treat contaminated groundwater before it emerged as surface water in North Walnut Creek.
SID	South Interceptor Ditch	A water feature designed to intercept runoff from the southern portion of the COU. The SID flows from west to east into Pond C-2. Woman Creek water does not enter Pond C-2, but is diverted around Pond C-2 through the Woman Creek Diversion Canal.
SPPTS	Solar Ponds Plume Treatment System	Engineered system designed to treat groundwater contaminated with uranium and nitrates. The nitrates originate from the former solar evaporation ponds, which had high levels of nitric acid. The uranium is primarily naturally occurring. Effluent from the SPPTS flows into North Walnut Creek.
SVOCs	semi-volatile organic compounds	Organic compounds that are not as volatile as solvent-related VOCs. SVOCs are found in many environmental media at Rocky Flats. They are found in materials like oil, coal, asphalt, and tar.
TCE	trichloroethylene	A volatile organic compound used as a solvent in past site operations. TCE is also a degradation product of PCE.
U	uranium	Naturally occurring radioactive element. There were two primary isotopes of U used during production activities. The first was enriched U, which contained a very high percentage (>90%) of U-235 and was used in nuclear weapons. The second isotope was U-238, also known as depleted uranium. U-238 has low levels of radioactivity.
ug/L or µg/L	micrograms per liter	A unit of contaminant concentration in water.
UHSU	upper hydrostratigraphic unit	A hydrogeological term describing the surficial materials and weathered bedrock found at Rocky Flats. The UHSU is hydraulically isolated from the lower hydrostratigraphic unit (see LHSU). Groundwater in some UHSU areas of Rocky Flats is contaminated with site-related COCs, while groundwater in other UHSU areas is not impacted. All groundwater in the UHSU emerges to surface water before it leaves Rocky Flats.

Rocky Flats Acronym List  
 Prepared for the Rocky Flats Stewardship Council  
 Rev. 02/20

Acronym or Term	Means	Definition
USFWS	United States Fish & Wildlife Service	The agency within the US Department of the Interior that is responsible for maintaining the nation-wide system of wildlife refuges, among other duties. The regional office is responsible for the RFNWR.
UUUE	unlimited use and unrestricted exposure	A regulatory term used to describe residual risk remaining after a site has been remediated. In 2007, the Peripheral Operable Unit (POU) was found to be suitable for unlimited use and unrestricted exposure (based on risk calculations). EPA removed the POU (now largely the Rocky Flats National Wildlife Refuge) from the EPA's National Priorities List of CERCLA or "Superfund" sites.
VOC	volatile organic compound	These compounds include cleaning solvents that were used in the manufacturing operations at Rocky Flats. The VOCs used at Rocky Flats include carbon tetrachloride (often called carbon tet), trichloroethene (TCE), perchloroethylene (PCE), and methylene chloride.
WALPOC	Walnut Creek Point of Compliance	The surface water Point of Compliance on Walnut Creek, at the COU boundary.
WCRA (or "the Authority")	Woman Creek Reservoir Authority	The group composed the cities of Westminster, Northglenn, and Thornton. These cities use Standley Lake as part of their drinking water supply network. Surface water from Rocky Flats formerly flowed through Woman Creek to Standley Lake, but the Woman Creek Reservoir was constructed to sever that connection. The Authority has an operations agreement with DOE to manage the Woman Creek Reservoir.
WOMPOC	Woman Creek Point of Compliance	The surface water Point of Compliance on Woman Creek, at the COU boundary.
WQCC	Water Quality Control Commission	State board within CDPHE tasked with overseeing water quality issues throughout the state. DOE has petitioned the WQCC several times in the last few years regarding water quality issues.
WRW	Wildlife Refuge Worker	User scenario on which exposure risks are calculated.
ZVI	zero valent iron	A type of fine iron particles formerly used to treat VOCs in the ETPTS and MSPTS.